

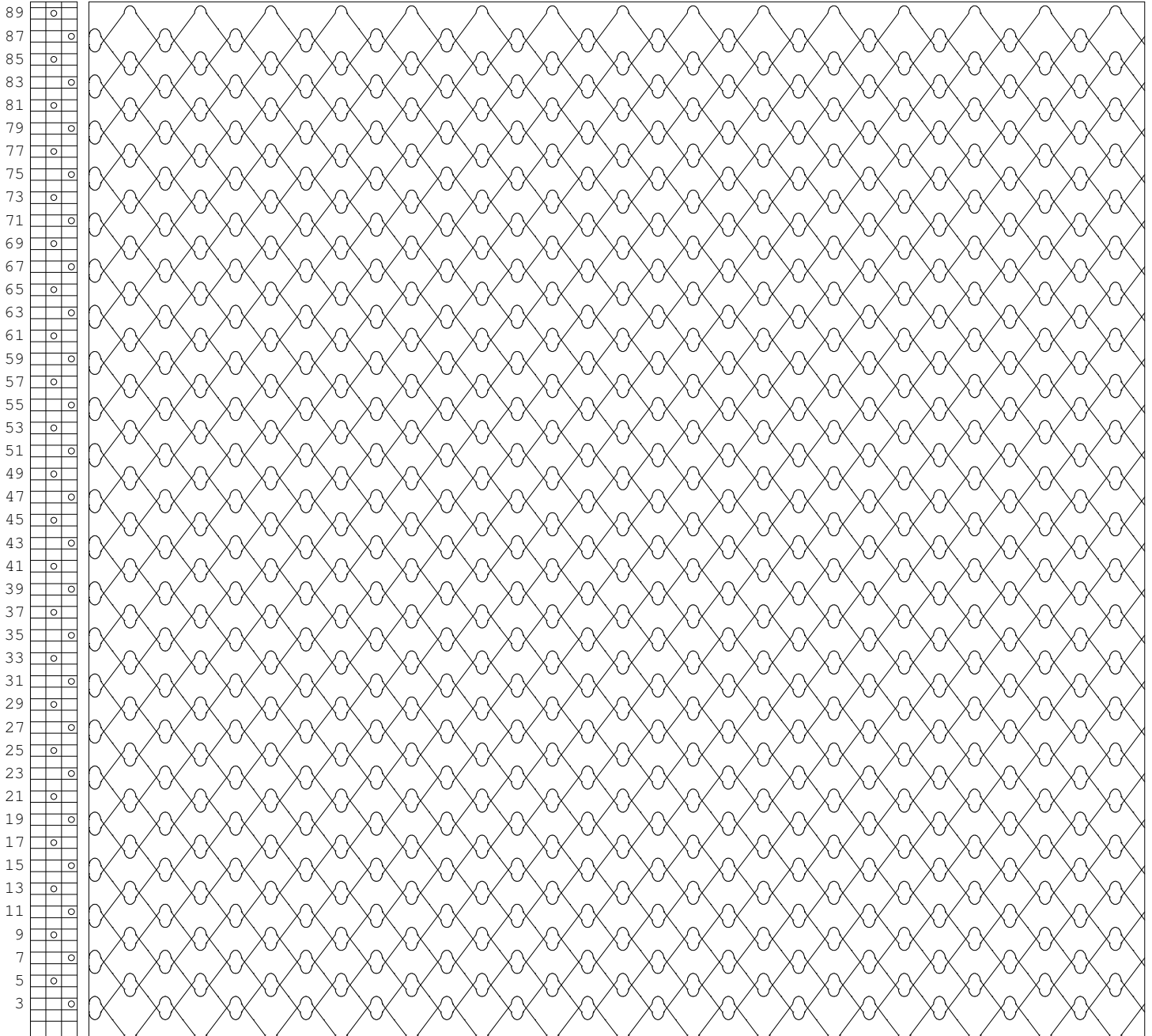
# Gribetz International Pattern Development

Pattern ID: 10NEWPAT  
Description: 10NEWPAT  
Pattern Type: C  
Units: E  
Needle Setting: sx2-2  
Shape File: c:\Complete BBs\10NEWPAT.BB  
Pattern Length: 6.00  
Pattern Width: 4.00  
Yield: 1.84 Yd/Min

Ticking:  
Fill 1:  
Fill 2:  
Fill 3:  
Fill 4:  
Backing:  
Panel Length: 60.00  
Panel Width: 80.00

3 2 1

Zoom Factor: 1.0:1



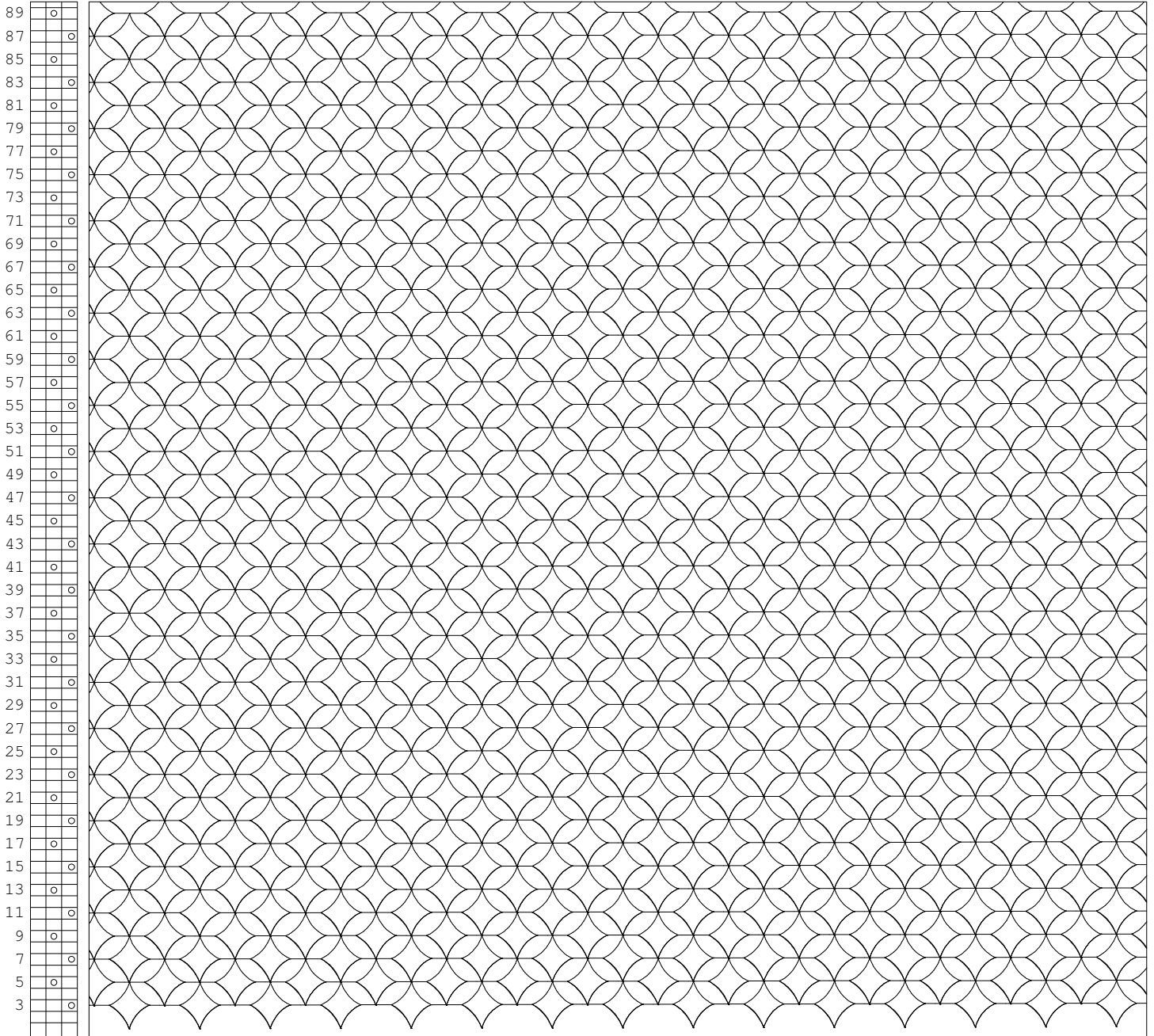
# Gribetz International Pattern Development

Pattern ID: 1234STAR  
Description: 1234STAR  
Pattern Type: C  
Units: E  
Needle Setting: sx2-2  
Shape File: c:\Complete BBs\1234STAR.BB  
Pattern Length: 6.00  
Pattern Width: 4.00  
Yield: 1.01 Yd/Min

Ticking:  
Fill 1:  
Fill 2:  
Fill 3:  
Fill 4:  
Backing:  
Panel Length: 60.00  
Panel Width: 80.00

3 2 1

Zoom Factor: 1.0:1



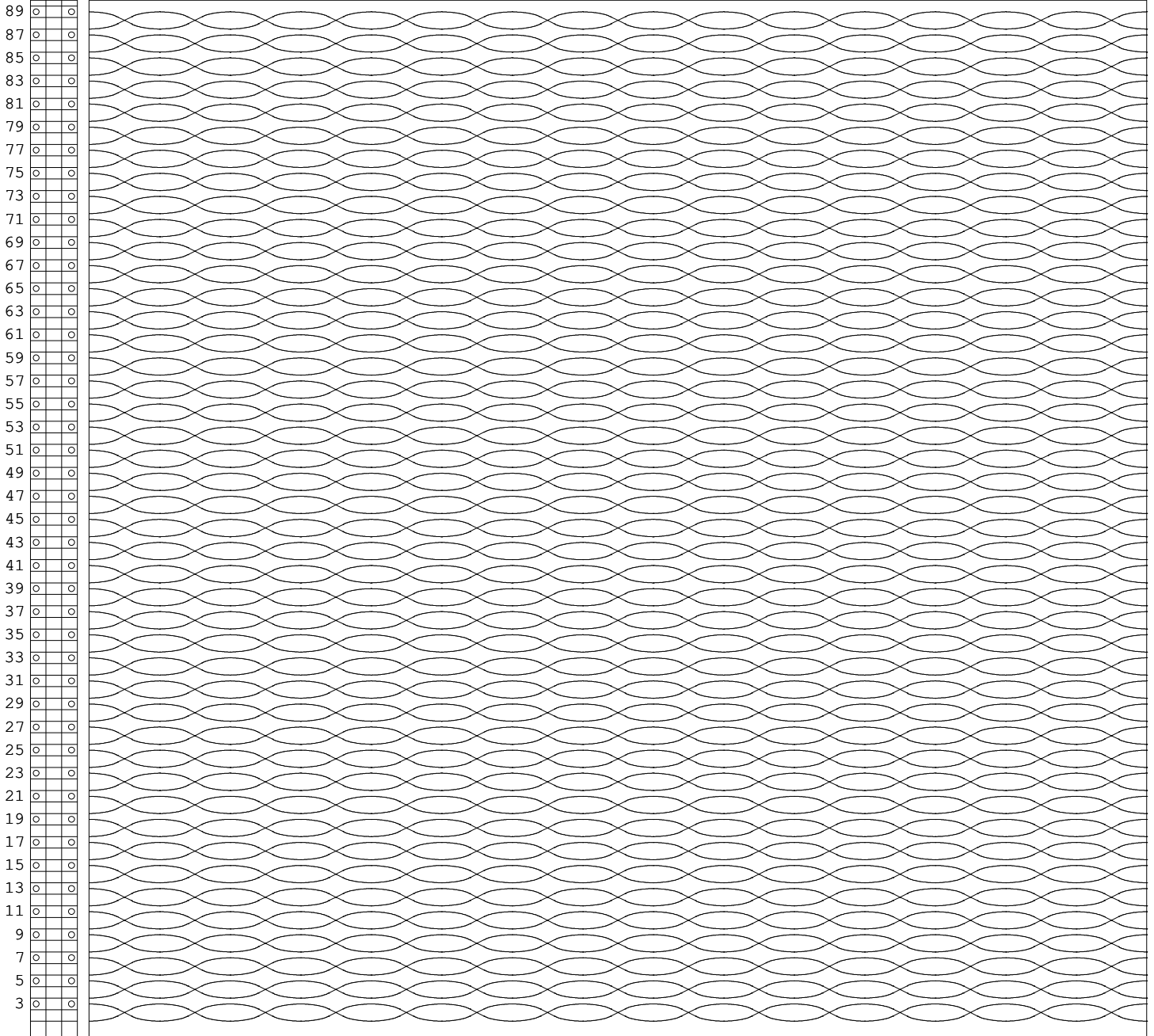
# Gribetz International Pattern Development

Pattern ID: 201  
Description: 201  
Pattern Type: C  
Units: E  
Needle Setting: dx2-3  
Shape File: C:\Complete BBs\201.BB  
Pattern Length: 12.00  
Pattern Width: 1.50  
Yield: 3.04 Yd/Min

Ticking:  
Fill 1:  
Fill 2:  
Fill 3:  
Fill 4:  
Backing:  
Panel Length: 60.00  
Panel Width: 80.00

3 2 1

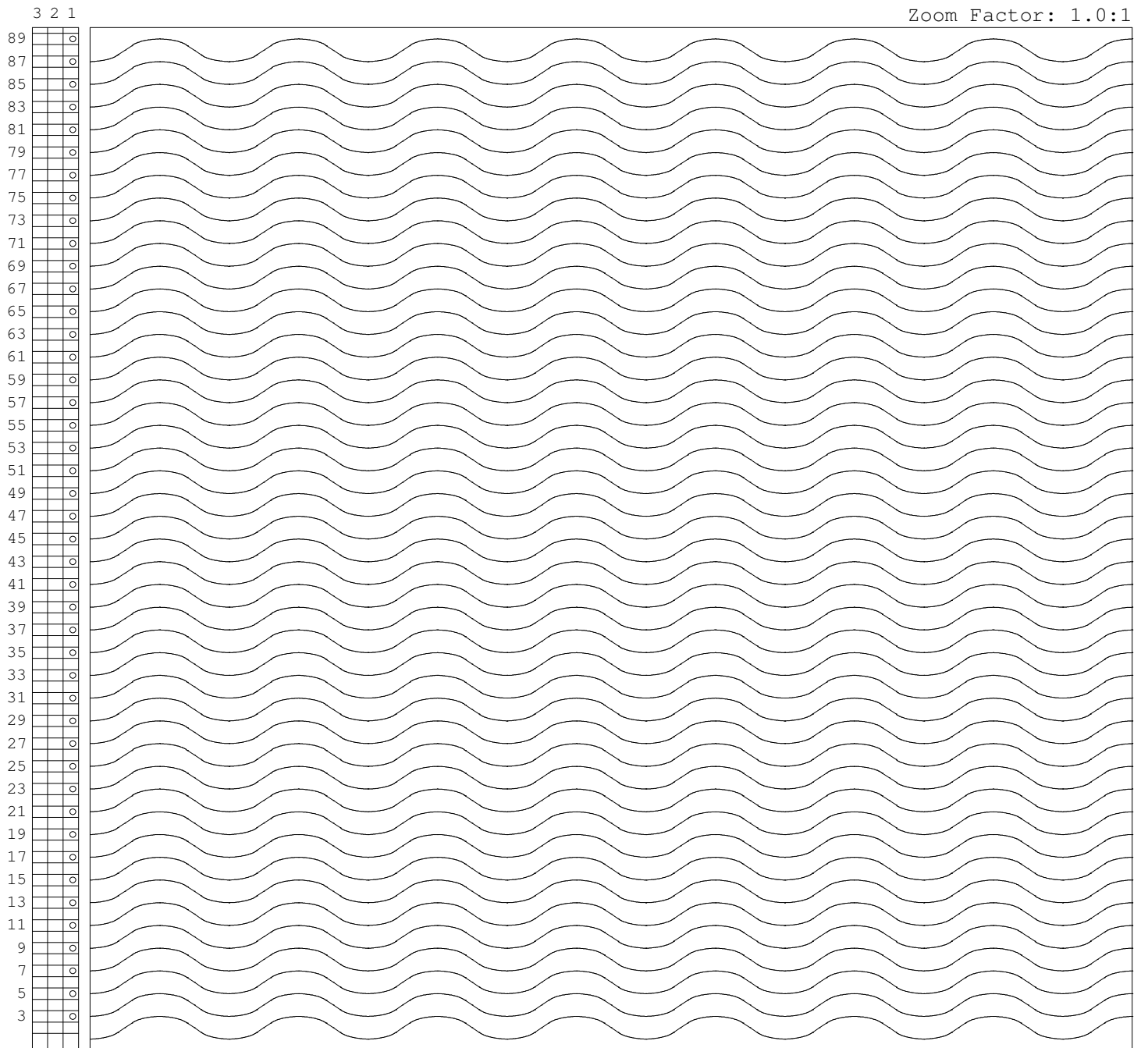
Zoom Factor: 1.0:1



# Gribetz International Pattern Development

Pattern ID: 201  
Description: 201  
Pattern Type: C  
Units: E  
Needle Setting: sx2-1  
Shape File: C:\Complete BBs\201.BB  
Pattern Length: 12.00  
Pattern Width: 2.00  
Yield: 2.95 Yd/Min

Ticking:  
Fill 1:  
Fill 2:  
Fill 3:  
Fill 4:  
Backing:  
Panel Length: 60.00  
Panel Width: 80.00



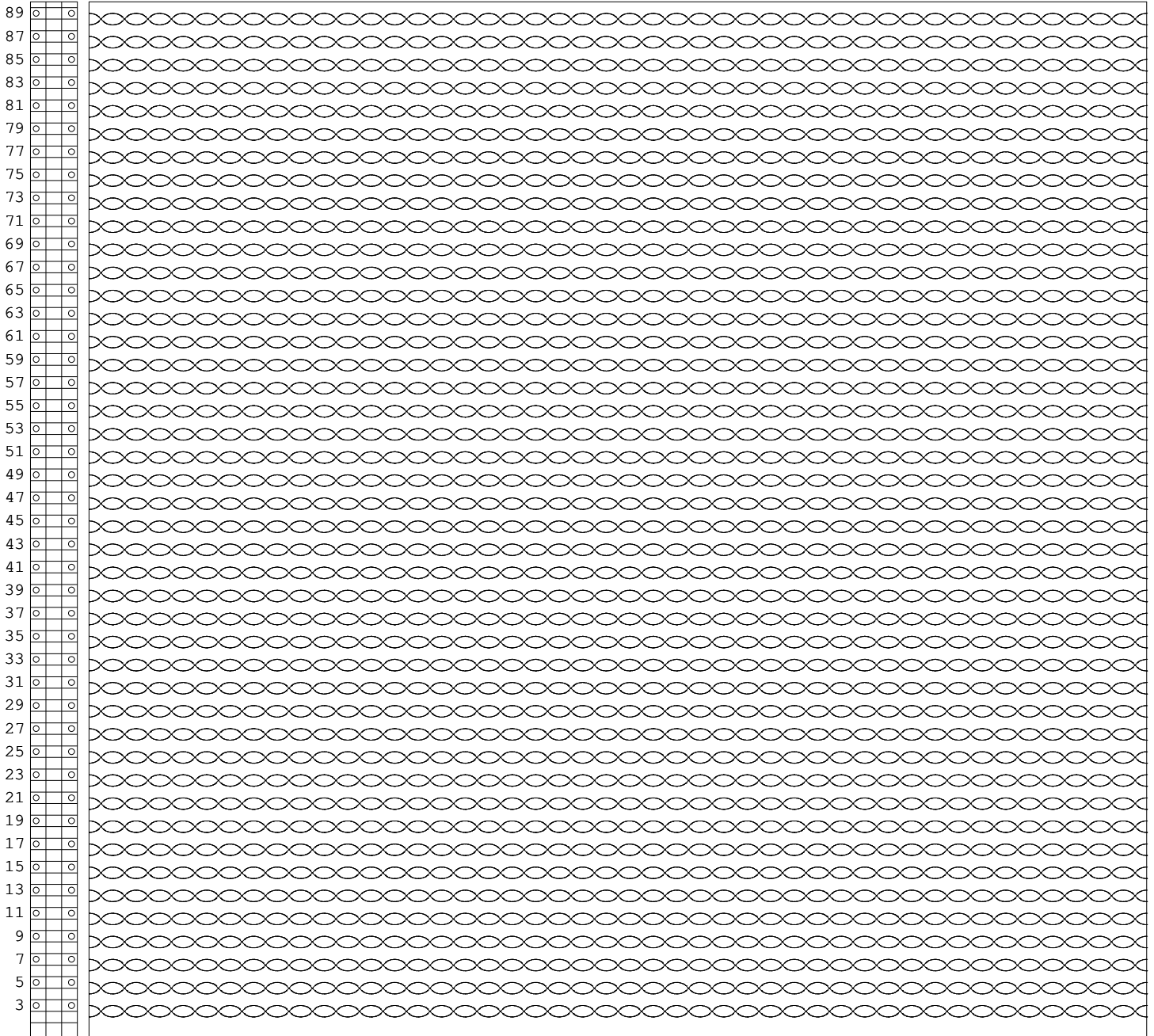
# Gribetz International Pattern Development

Pattern ID: 201  
Description: 201  
Pattern Type: C  
Units: E  
Needle Setting: dx2-3  
Shape File: h:\PDS\COMPLETE BB\CLASS 1\201.BB  
Pattern Length: 4.00  
Pattern Width: 1.00  
Yield: 2.74 Yd/Min

Ticking:  
Fill 1:  
Fill 2:  
Fill 3:  
Fill 4:  
Backing:  
Panel Length: 60.00  
Panel Width: 80.00

3 2 1

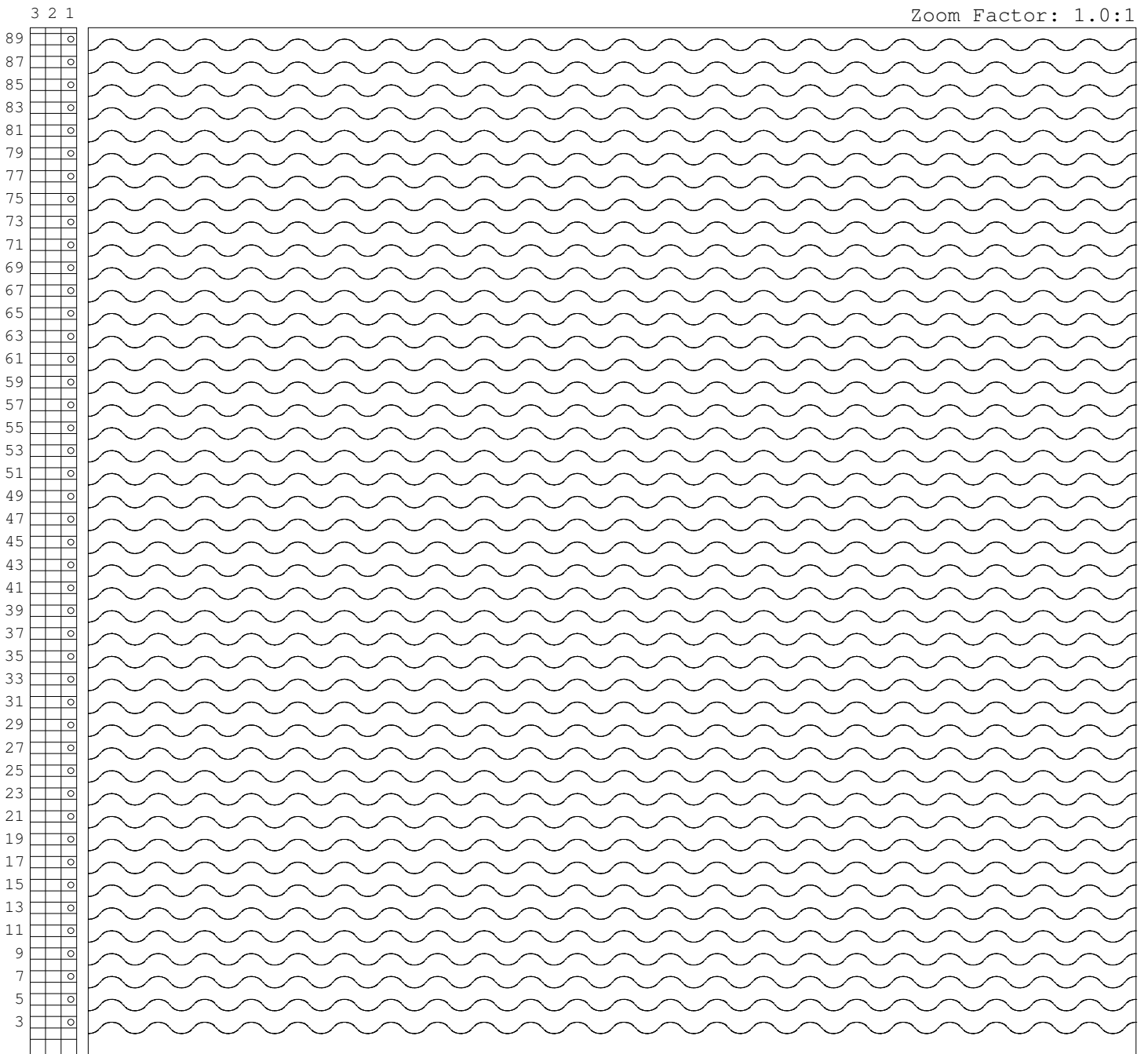
Zoom Factor: 1.0:1



# Gribetz International Pattern Development

Pattern ID: 201  
Description: 201  
Pattern Type: C  
Units: E  
Needle Setting: sx2-1  
Shape File: h:\PDS\COMPLETE BB\CLASS 1\201.BB  
Pattern Length: 4.00  
Pattern Width: 1.00  
Yield: 2.74 Yd/Min

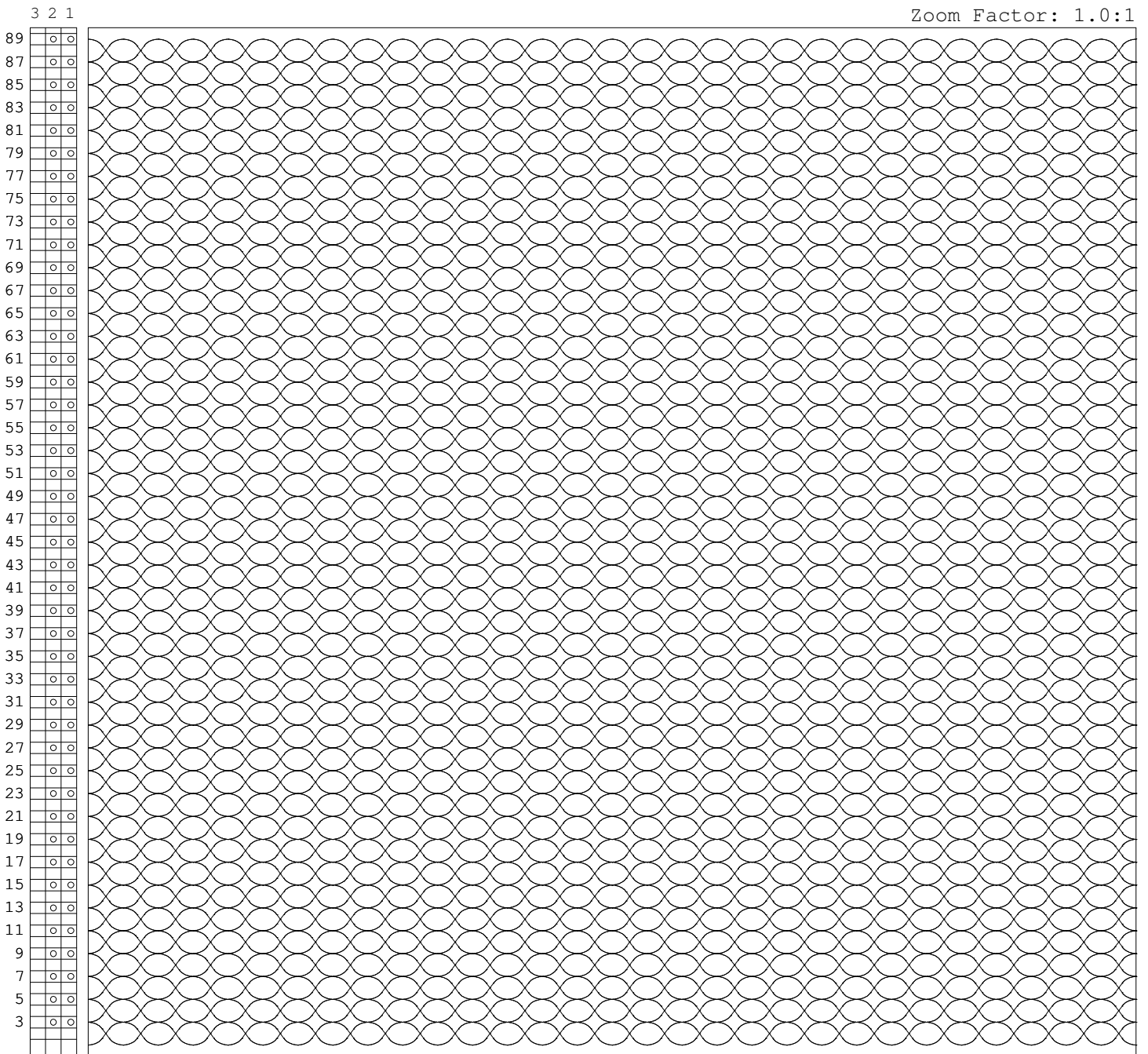
Ticking:  
Fill 1:  
Fill 2:  
Fill 3:  
Fill 4:  
Backing:  
Panel Length: 60.00  
Panel Width: 80.00



# Gribetz International Pattern Development

Pattern ID: 201  
Description: 201  
Pattern Type: C  
Units: E  
Needle Setting: dx2-2  
Shape File: C:\Complete BBs\201.BB  
Pattern Length: 6.00  
Pattern Width: 2.00  
Yield: 2.52 Yd/Min

Ticking:  
Fill 1:  
Fill 2:  
Fill 3:  
Fill 4:  
Backing:  
Panel Length: 60.00  
Panel Width: 80.00



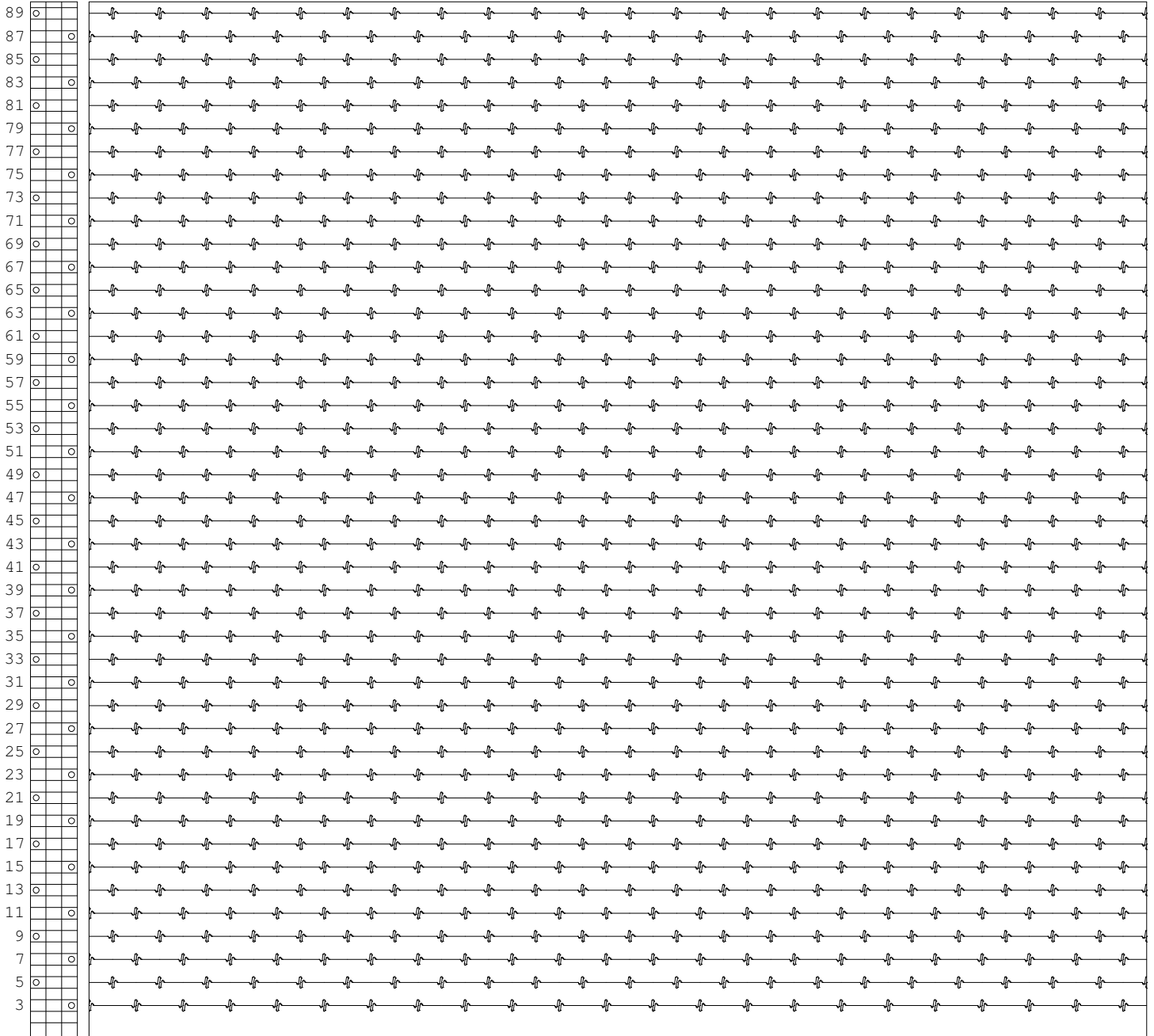
# Gribetz International Pattern Development

Pattern ID: 2LNZAGS  
Description: 2LNZAGS  
Pattern Type: C  
Units: E  
Needle Setting: sx2-3  
Shape File: h:\PDS\COMPLETE BB\OPTION 3\2LNZAGS.BB  
Pattern Length: 4.00  
Pattern Width: 1.00  
Yield: 1.98 Yd/Min

Ticking:  
Fill 1:  
Fill 2:  
Fill 3:  
Fill 4:  
Backing:  
Panel Length: 60.00  
Panel Width: 80.00

3 2 1

Zoom Factor: 1.0:1

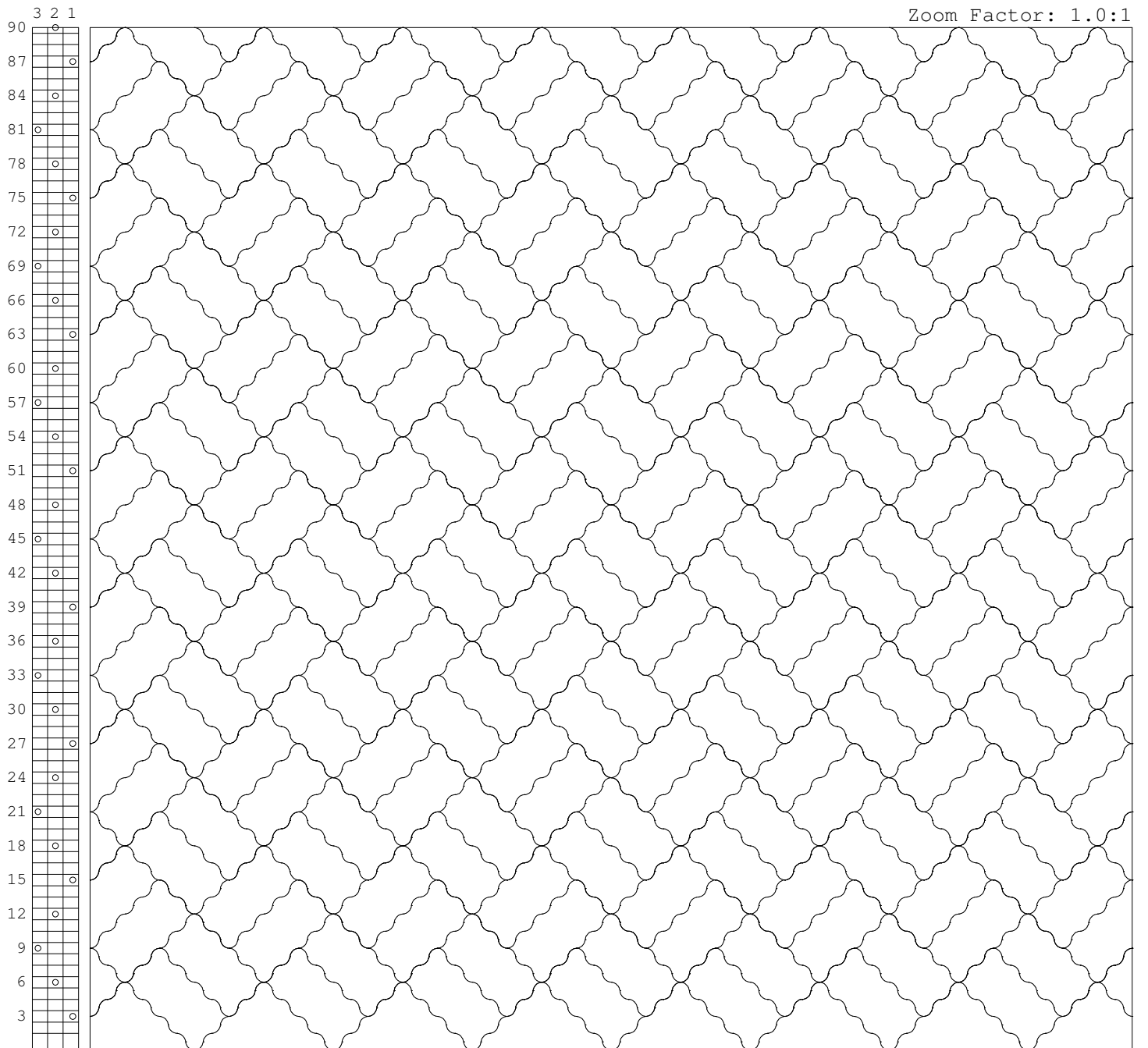




# Gribetz International Pattern Development

Pattern ID: 303  
Description: 303  
Pattern Type: C  
Units: E  
Needle Setting: sx3-2-3  
Shape File: c:\Complete BBs\303.BB  
Pattern Length: 12.00  
Pattern Width: 6.00  
Yield: 2.06 Yd/Min

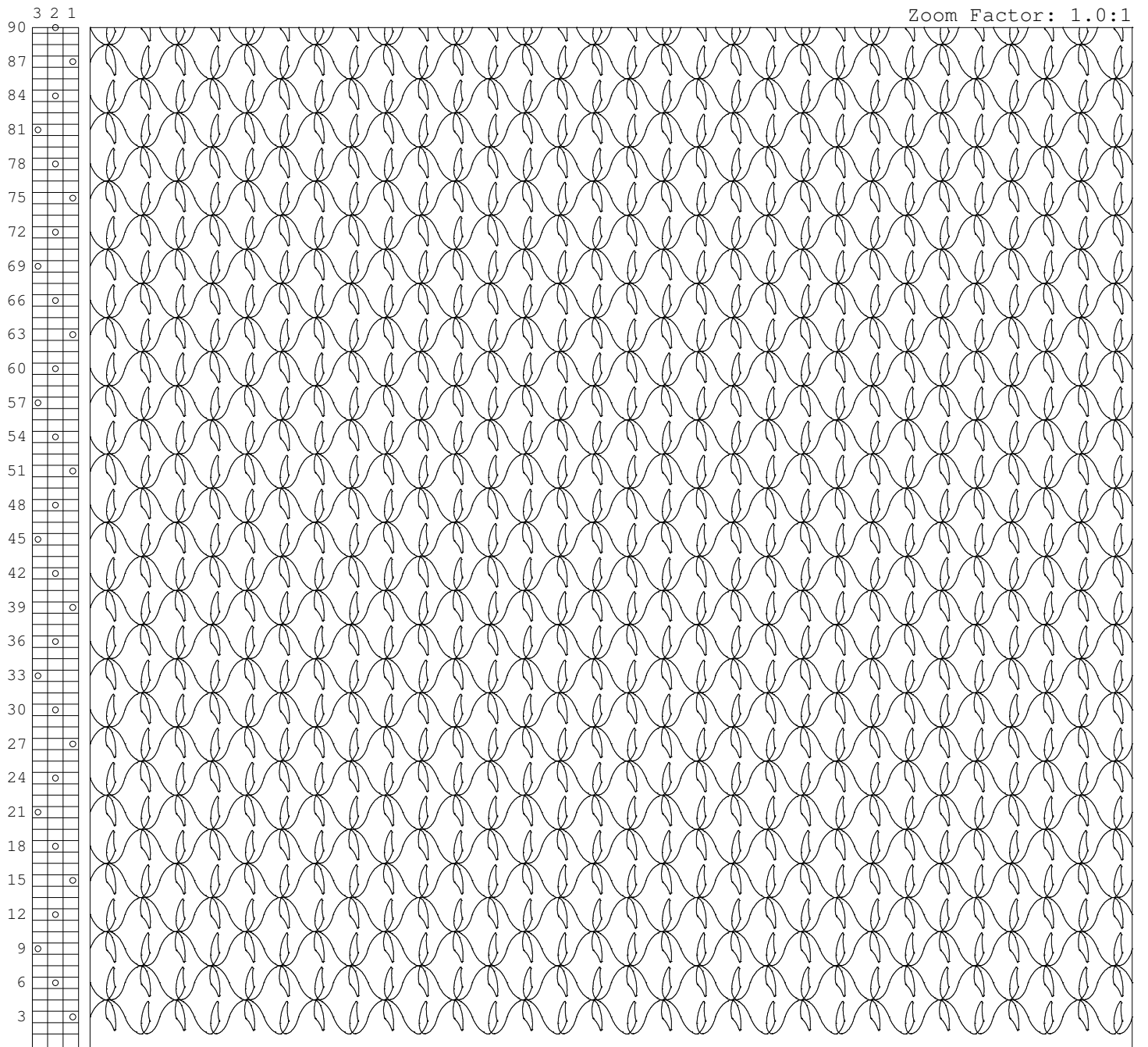
Ticking:  
Fill 1:  
Fill 2:  
Fill 3:  
Fill 4:  
Backing:  
Panel Length: 60.00  
Panel Width: 80.00



# Gribetz International Pattern Development

Pattern ID: 340-LEAF  
Description: 340-LEAF  
Pattern Type: C  
Units: E  
Needle Setting: sx3-2-3  
Shape File: c:\Complete BBs\340-LEAF.BB  
Pattern Length: 6.00  
Pattern Width: 3.00  
Yield: .91 Yd/Min

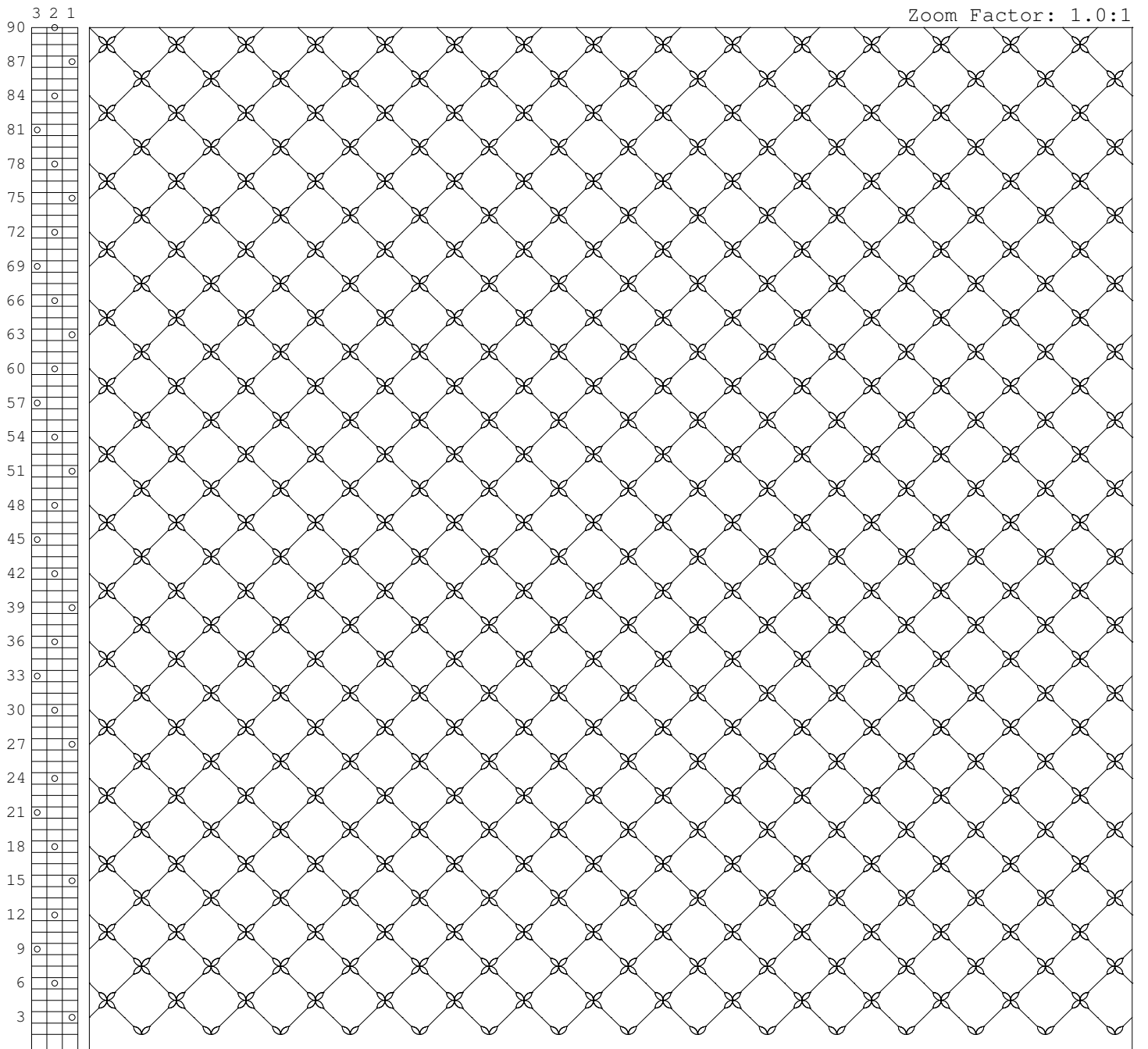
Ticking:  
Fill 1:  
Fill 2:  
Fill 3:  
Fill 4:  
Backing:  
Panel Length: 60.00  
Panel Width: 80.00



# Gribetz International Pattern Development

Pattern ID: 4LFLIN3  
Description: 4LFLIN3  
Pattern Type: C  
Units: E  
Needle Setting: sx3-2-3  
Shape File: c:\Complete BBs\4LFLIN3.BB  
Pattern Length: 6.00  
Pattern Width: 3.00  
Yield: 1.1 Yd/Min

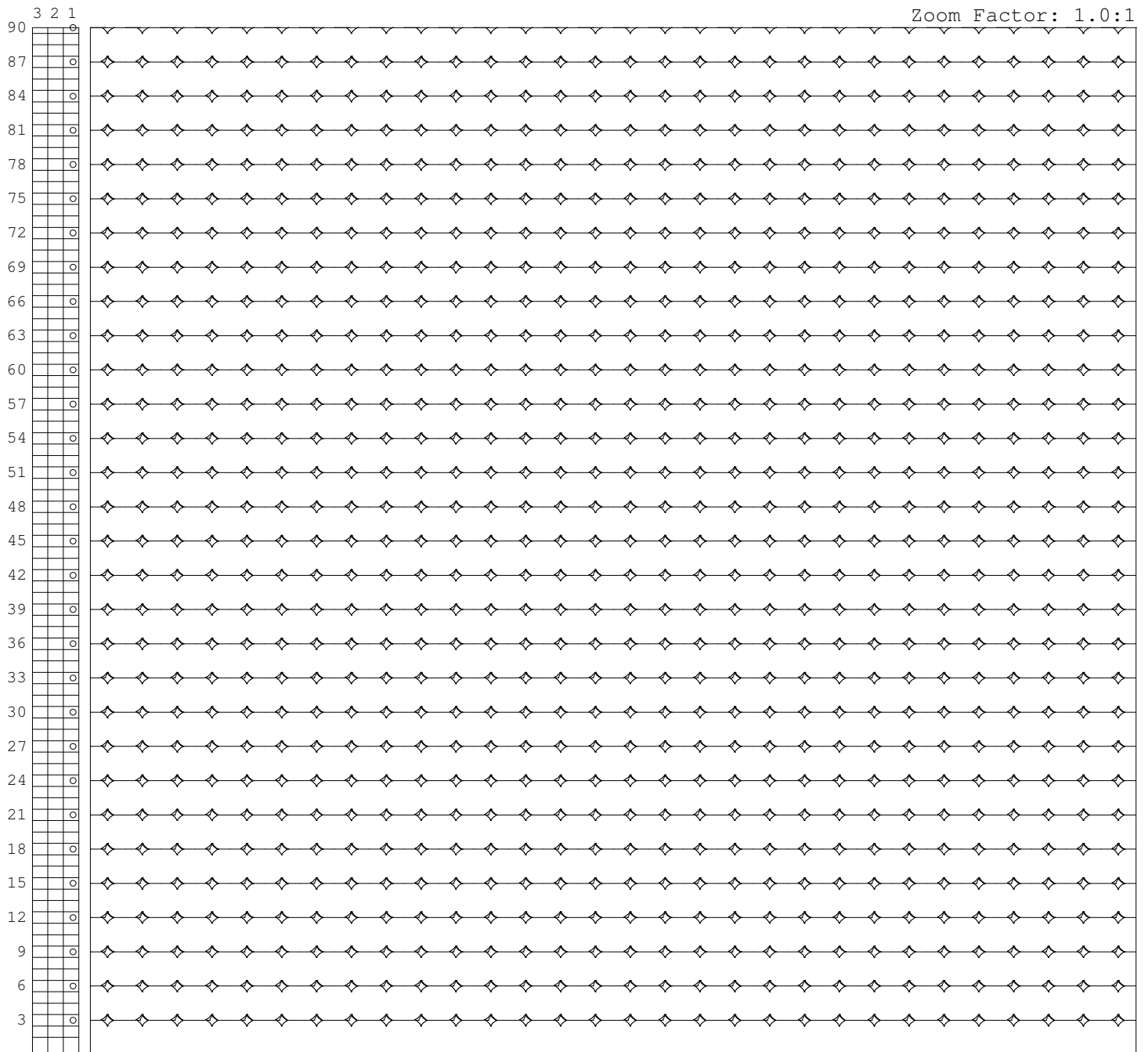
Ticking:  
Fill 1:  
Fill 2:  
Fill 3:  
Fill 4:  
Backing:  
Panel Length: 60.00  
Panel Width: 80.00



# Gribetz International Pattern Development

Pattern ID: 4STARLN1  
Description: 4STARLN1  
Pattern Type: C  
Units: E  
Needle Setting: sx3-1  
Shape File: c:\Complete BBs\4STARLN1.BB  
Pattern Length: 3.00  
Pattern Width: 1.00  
Yield: 1.45 Yd/Min

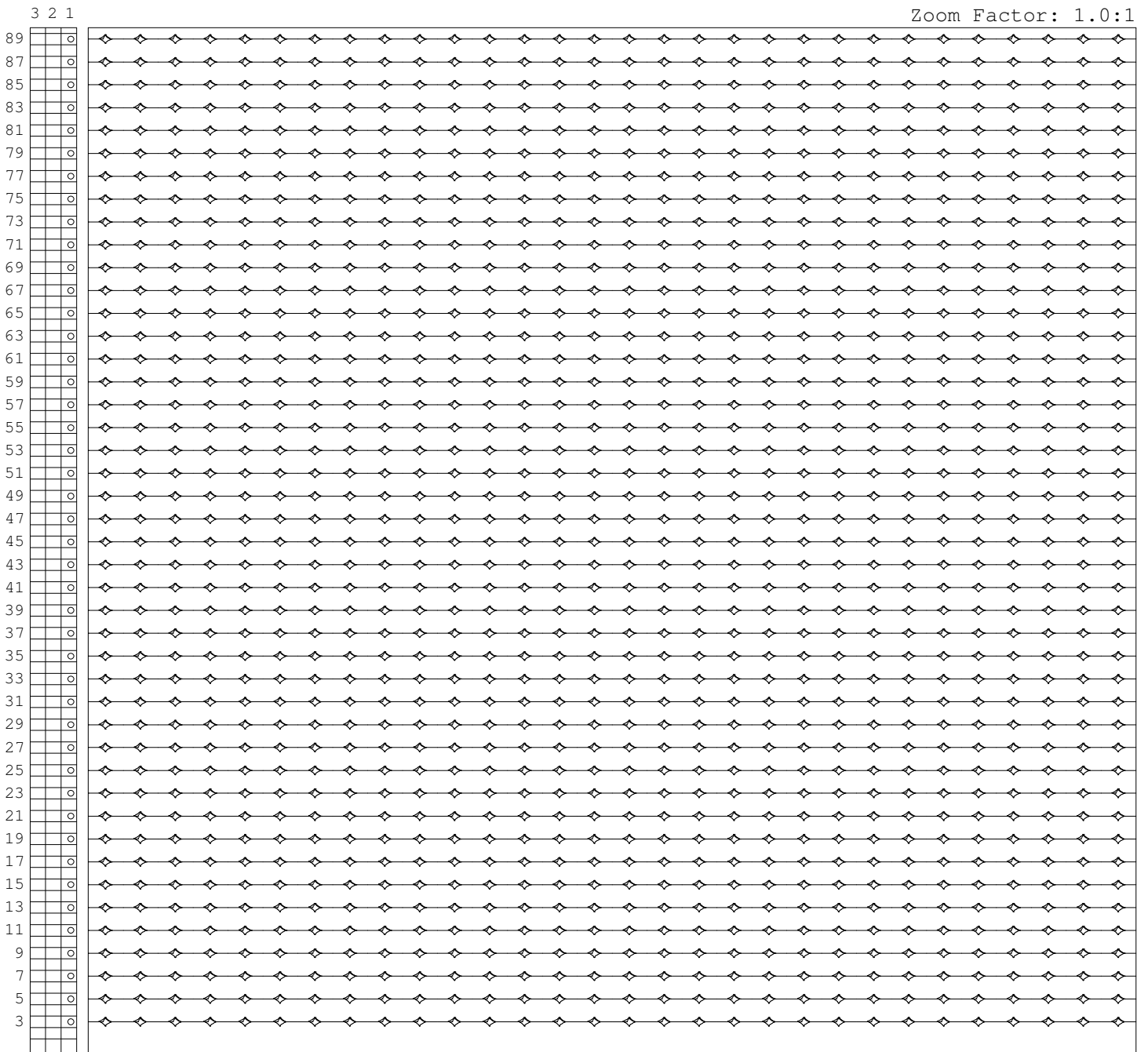
Ticking:  
Fill 1:  
Fill 2:  
Fill 3:  
Fill 4:  
Backing:  
Panel Length: 60.00  
Panel Width: 80.00



# Gribetz International Pattern Development

Pattern ID: 4STARLN1  
Description: 4STARLN1  
Pattern Type: C  
Units: E  
Needle Setting: sx2-1  
Shape File: h:\PDS\COMPLETE BB\OPTION 3\4STARLN1.BB  
Pattern Length: 3.00  
Pattern Width: .75  
Yield: 1.58 Yd/Min

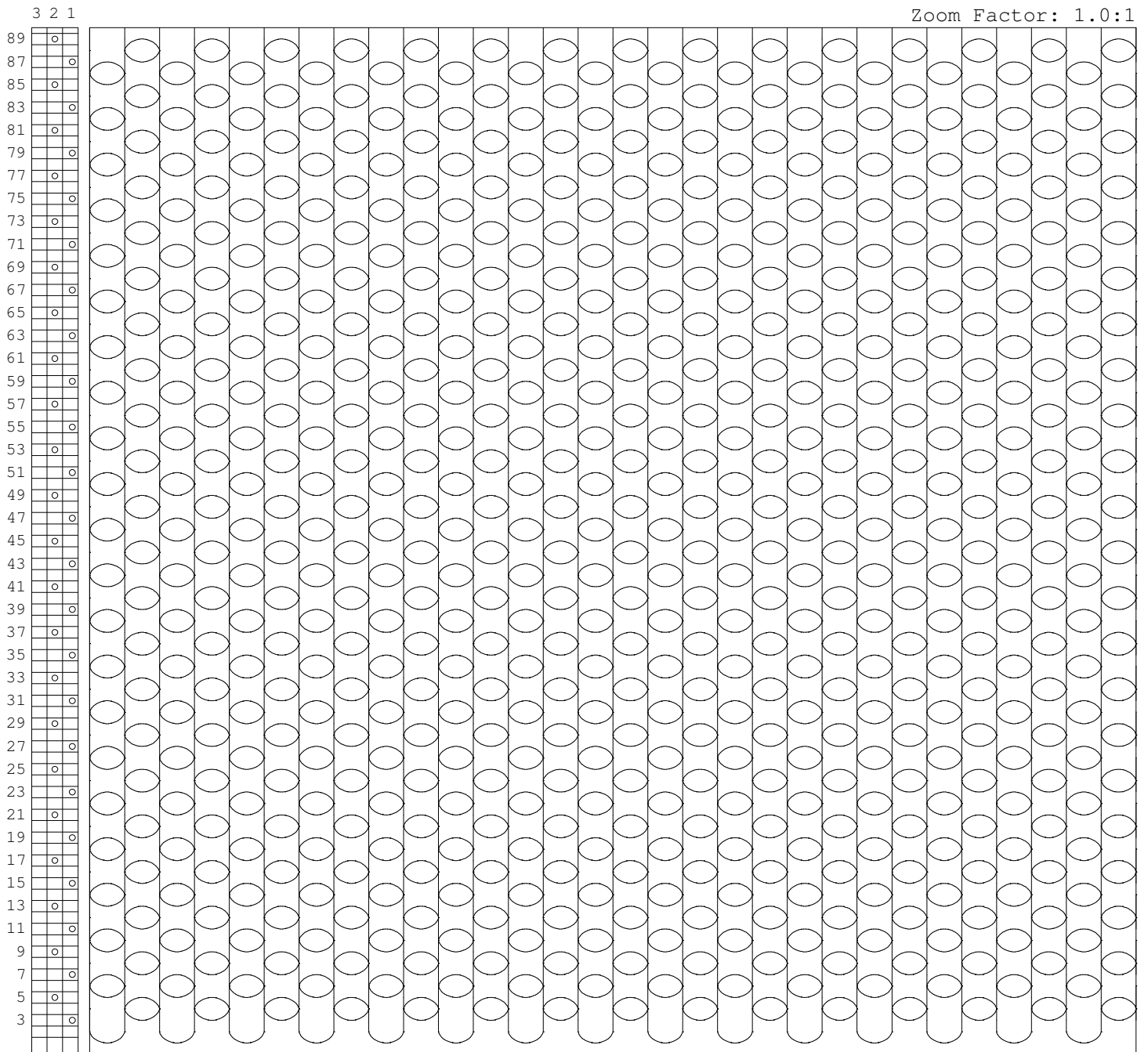
Ticking:  
Fill 1:  
Fill 2:  
Fill 3:  
Fill 4:  
Backing:  
Panel Length: 60.00  
Panel Width: 80.00



# Gribetz International Pattern Development

Pattern ID: 705  
Description: 705  
Pattern Type: C  
Units: E  
Needle Setting: sx2-2  
Shape File: c:\Complete BBs\705.BB  
Pattern Length: 6.00  
Pattern Width: 4.00  
Yield: 1.62 Yd/Min

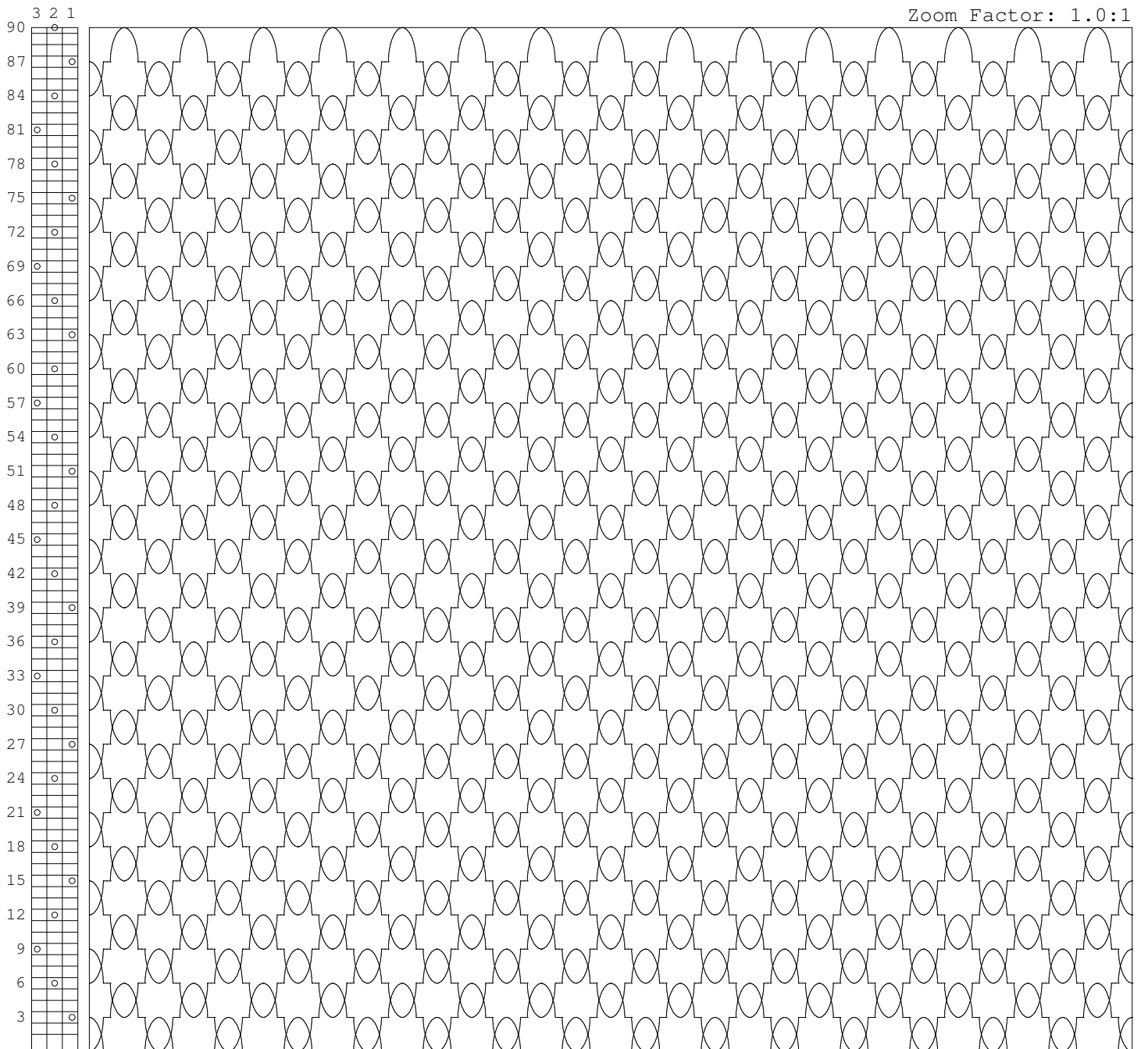
Ticking:  
Fill 1:  
Fill 2:  
Fill 3:  
Fill 4:  
Backing:  
Panel Length: 60.00  
Panel Width: 80.00



# Gribetz International Pattern Development

Pattern ID: 800  
Description: 800  
Pattern Type: C  
Units: E  
Needle Setting: sx3-2-3  
Shape File: c:\Complete BBs\800.BB  
Pattern Length: 6.00  
Pattern Width: 6.00  
Yield: 1.28 Yd/Min

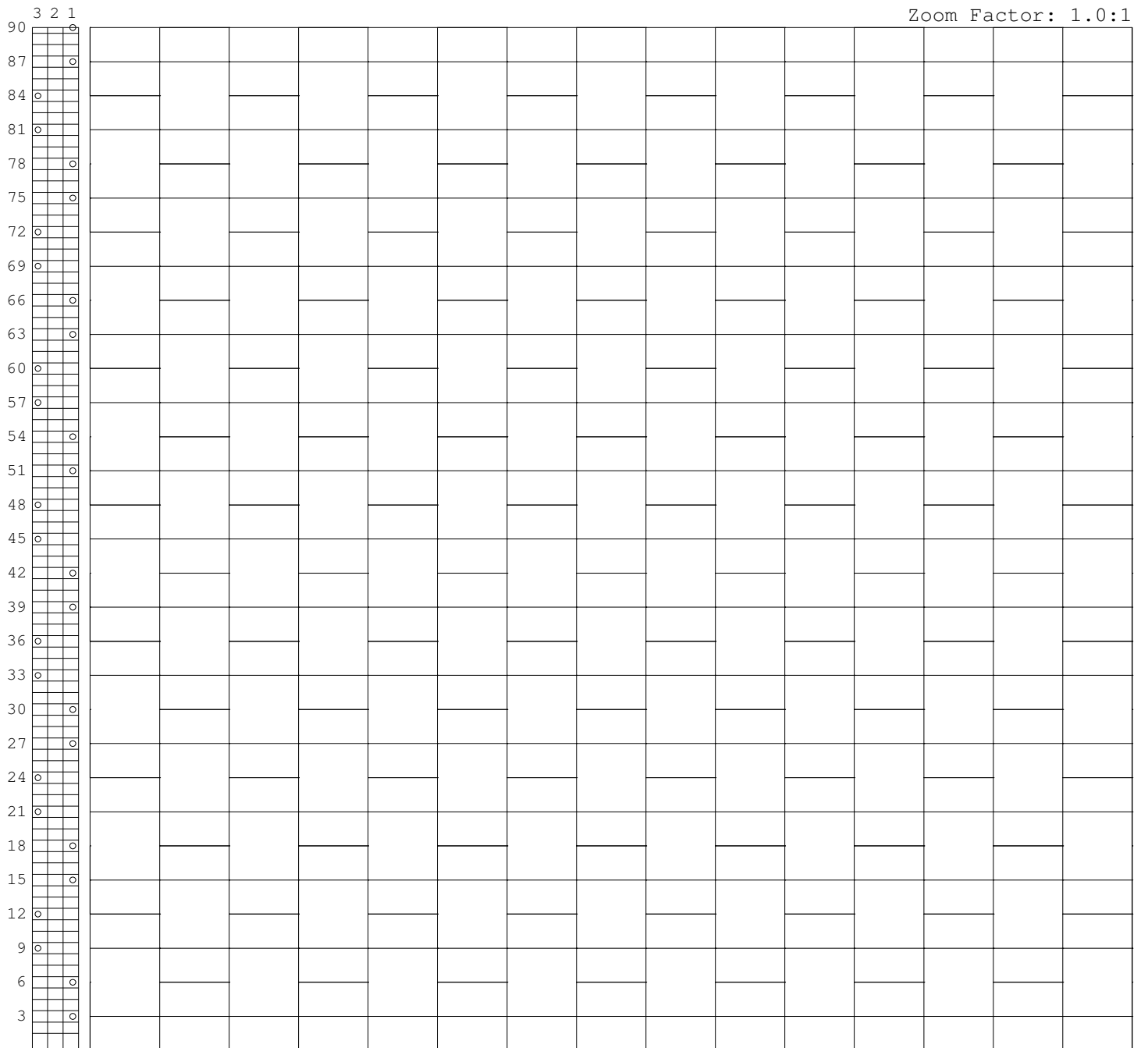
Ticking:  
Fill 1:  
Fill 2:  
Fill 3:  
Fill 4:  
Backing:  
Panel Length: 60.00  
Panel Width: 80.00



# Gribetz International Pattern Development

Pattern ID: BOX  
Description: BOX  
Pattern Type: C  
Units: E  
Needle Setting: 3x3-3  
Shape File: h:\PDS\COMPLETE BB\CLASS II\BOX.BB  
Pattern Length: 12.00  
Pattern Width: 3.00  
Yield: 2.12 Yd/Min

Ticking:  
Fill 1:  
Fill 2:  
Fill 3:  
Fill 4:  
Backing:  
Panel Length: 60.00  
Panel Width: 80.00

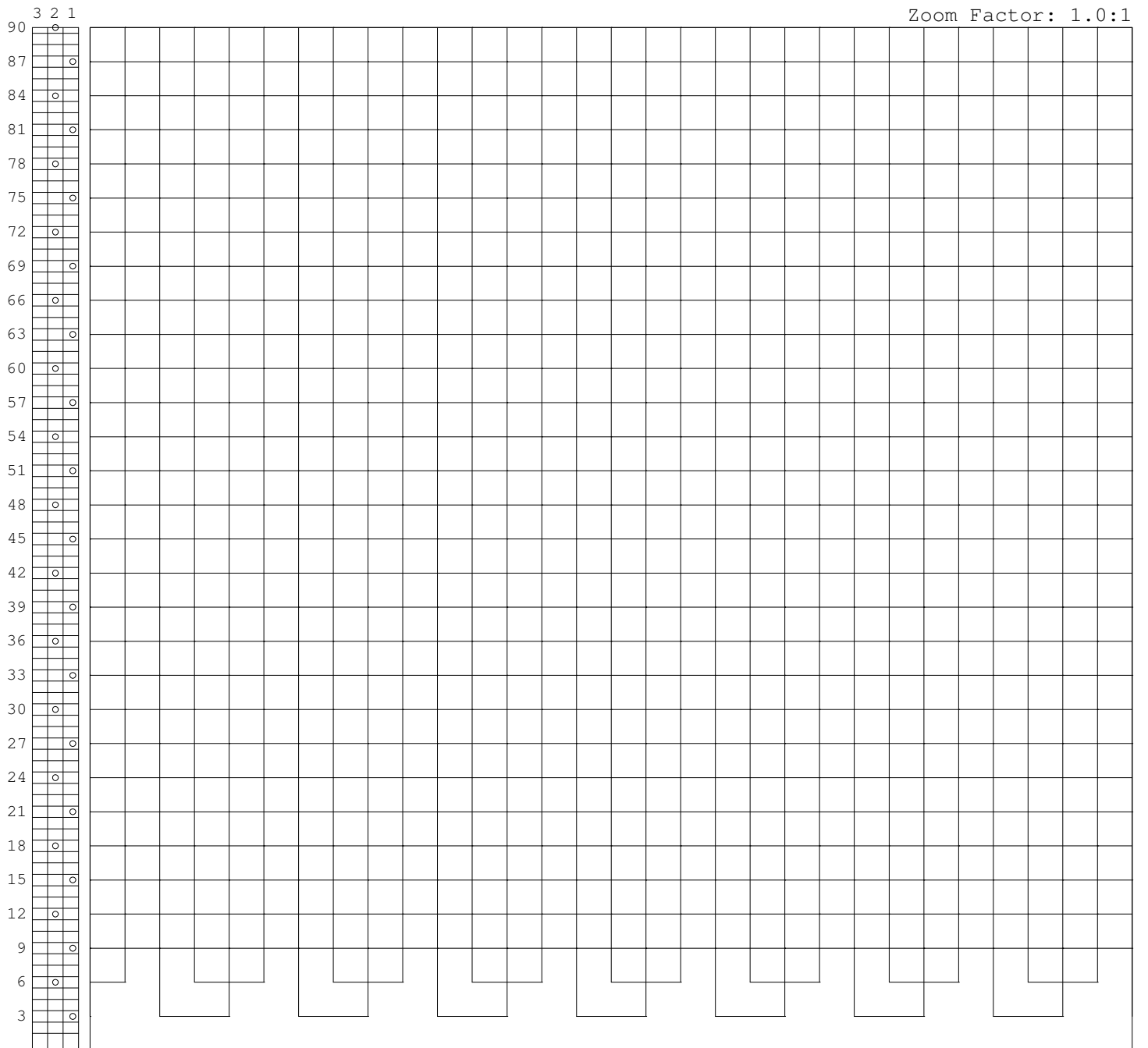




# Gribetz International Pattern Development

Pattern ID: BOX  
Description: BOX  
Pattern Type: C  
Units: E  
Needle Setting: sx3-2  
Shape File: C:\Complete BBs\BOX.BB  
Pattern Length: 12.00  
Pattern Width: 6.00  
Yield: 1.59 Yd/Min

Ticking:  
Fill 1:  
Fill 2:  
Fill 3:  
Fill 4:  
Backing:  
Panel Length: 60.00  
Panel Width: 80.00



# Gribetz International Pattern Development

Pattern ID: BOX  
Description: BOX  
Pattern Type: C  
Units: E  
Needle Setting: sx5-1  
Shape File: c:\Complete BBs\BOX.BB  
Pattern Length: 2.00  
Pattern Width: 4.50  
Yield: .58 Yd/Min

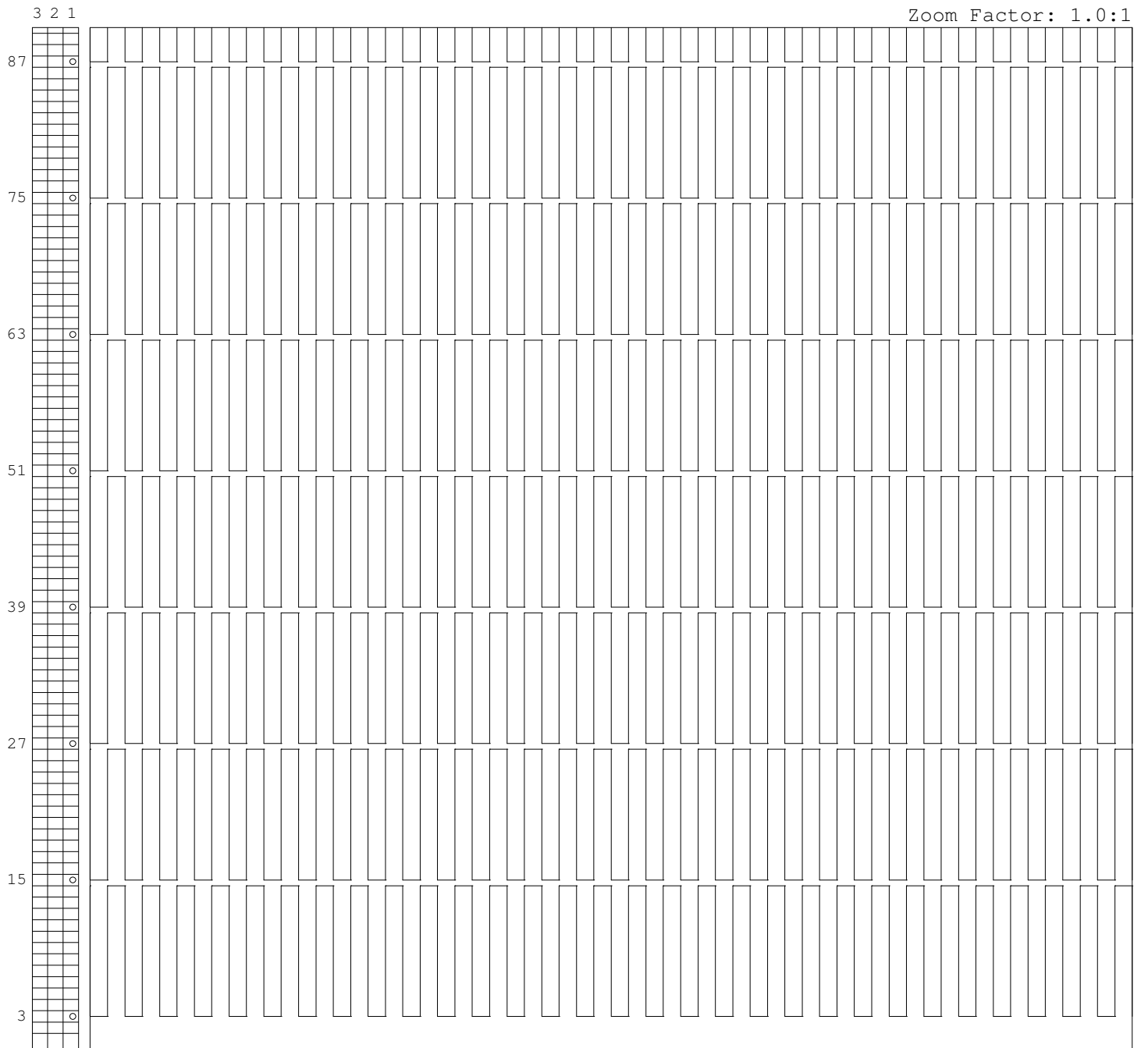
Ticking:  
Fill 1:  
Fill 2:  
Fill 3:  
Fill 4:  
Backing:  
Panel Length: 60.00  
Panel Width: 80.00



# Gribetz International Pattern Development

Pattern ID: BOX  
Description: BOX  
Pattern Type: C  
Units: E  
Needle Setting: sx12-1  
Shape File: c:\Complete BBs\BOX.BB  
Pattern Length: 3.00  
Pattern Width: 11.50  
Yield: .37 Yd/Min

Ticking:  
Fill 1:  
Fill 2:  
Fill 3:  
Fill 4:  
Backing:  
Panel Length: 60.00  
Panel Width: 80.00



# Gribetz International Pattern Development

Pattern ID: CHANNEL  
Description: CHANNEL  
Pattern Type: C  
Units: E  
Needle Setting: sx2-1  
Shape File: c:\Complete BBs\CHANNEL.BB  
Pattern Length: 12.00  
Pattern Width: .00  
Yield: 3.17 Yd/Min

Ticking:  
Fill 1:  
Fill 2:  
Fill 3:  
Fill 4:  
Backing:  
Panel Length: 60.00  
Panel Width: 80.00

3 2 1

Zoom Factor: 1.0:1

89				
87				
85				
83				
81				
79				
77				
75				
73				
71				
69				
67				
65				
63				
61				
59				
57				
55				
53				
51				
49				
47				
45				
43				
41				
39				
37				
35				
33				
31				
29				
27				
25				
23				
21				
19				
17				
15				
13				
11				
9				
7				
5				
3				

# Gribetz International Pattern Development

Pattern ID: CHANNEL  
Description: CHANNEL  
Pattern Type: C  
Units: E  
Needle Setting: sx3-1  
Shape File: c:\Complete BBs\CHANNEL.BB  
Pattern Length: 12.00  
Pattern Width: .00  
Yield: 3.17 Yd/Min

Ticking:  
Fill 1:  
Fill 2:  
Fill 3:  
Fill 4:  
Backing:  
Panel Length: 60.00  
Panel Width: 80.00



# Gribetz International Pattern Development

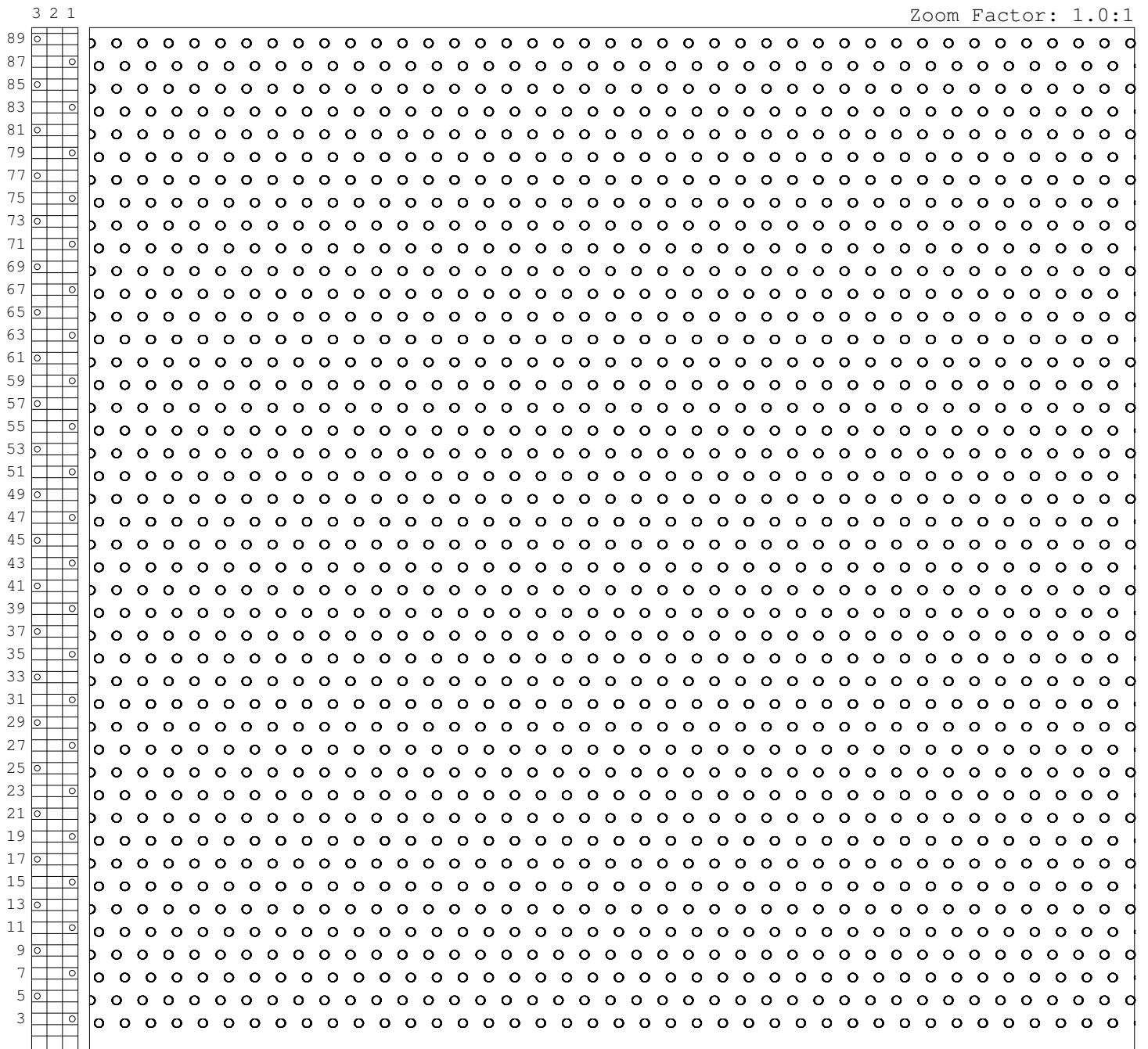
Pattern ID: CIRCL721  
Description: CIRCL721  
Pattern Type: T  
Units: E  
Needle Setting: sx2-3  
Shape File: c:\Complete BBs\CIRCL721.BB  
Pattern Length: .75  
Pattern Width: .75

Ticking:  
Fill 1:  
Fill 2:  
Fill 3:  
Fill 4:  
Backing:  
Panel Length: 60.00  
Panel Width: 80.00

## Tack & Jump Information:

Feed Jump: 2.25  
Carriage Jump: 0  
# Tack Stitches: 3

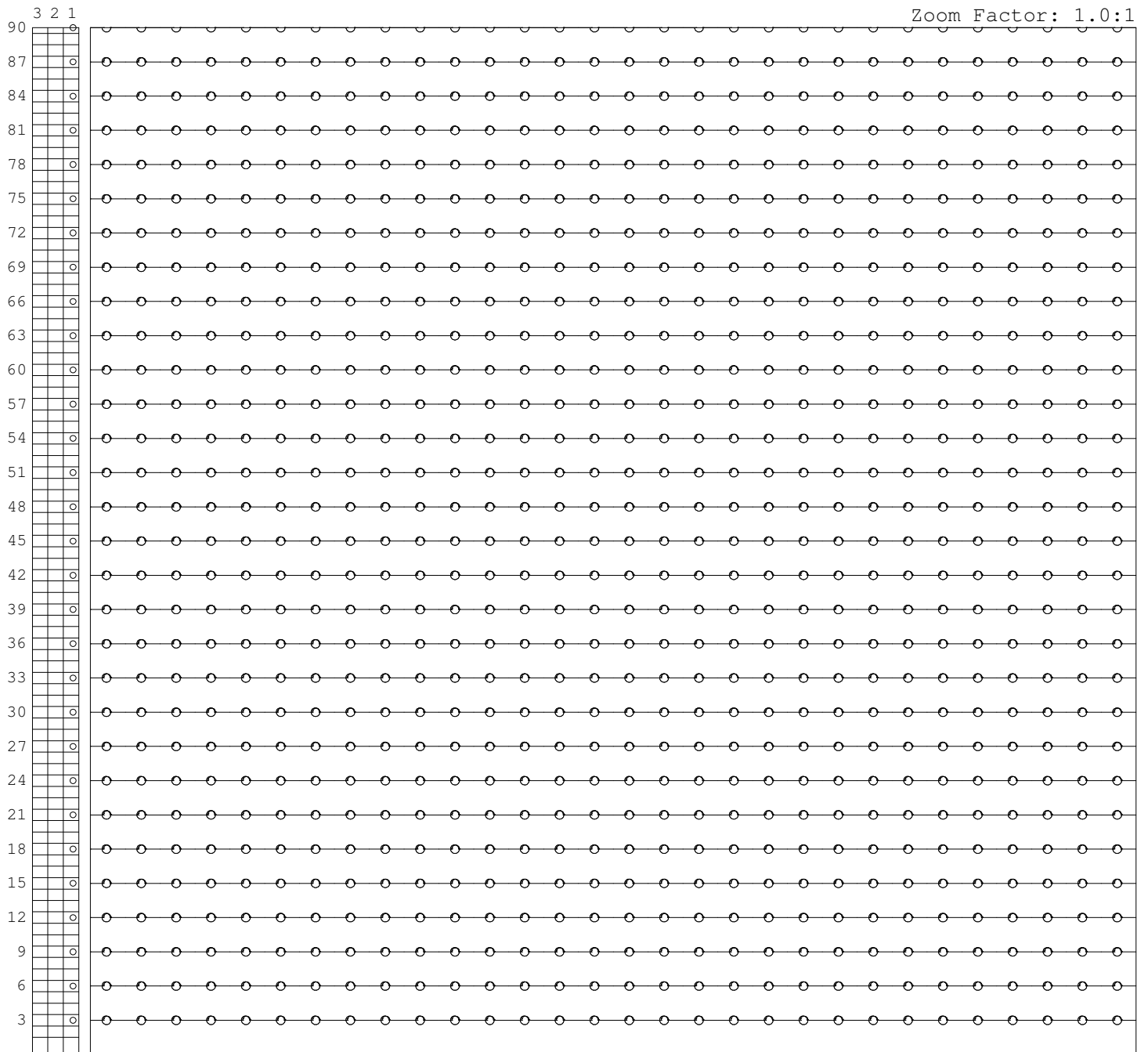
Feed Comp: 0  
Carr Comp: 0  
Tail Length: 0.75



# Gribetz International Pattern Development

Pattern ID: CIRCLN1  
Description: CIRCLN1  
Pattern Type: C  
Units: E  
Needle Setting: sx3-1  
Shape File: c:\Complete BBs\CIRCLN1.BB  
Pattern Length: 3.00  
Pattern Width: .75  
Yield: 1.63 Yd/Min

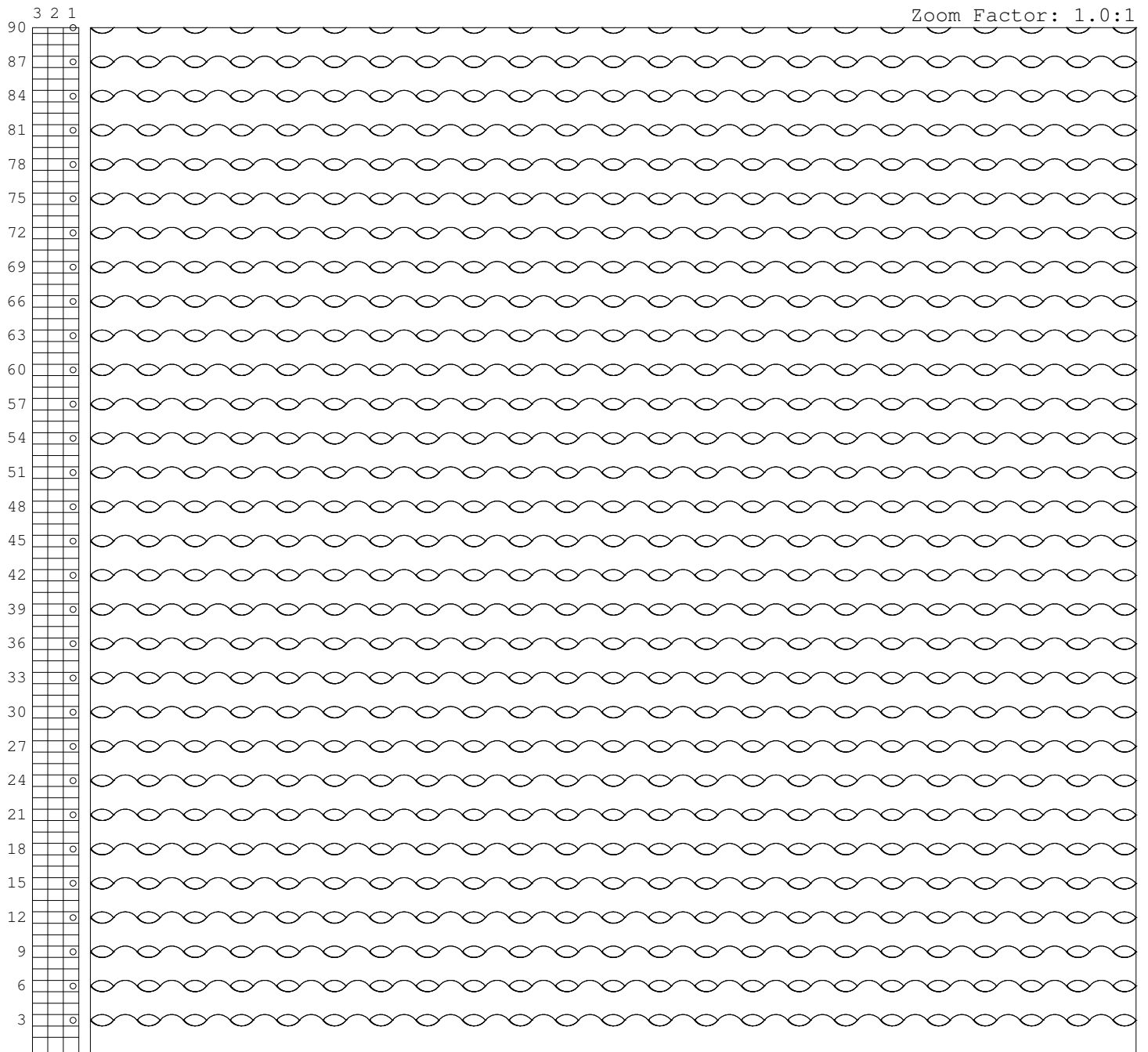
Ticking:  
Fill 1:  
Fill 2:  
Fill 3:  
Fill 4:  
Backing:  
Panel Length: 60.00  
Panel Width: 80.00



# Gribetz International Pattern Development

Pattern ID: CLIPGAME  
Description: CLIPGAME  
Pattern Type: C  
Units: E  
Needle Setting: sx3-1  
Shape File: c:\Complete BBs\CLIPGAME.BB  
Pattern Length: 4.00  
Pattern Width: 1.00  
Yield: 1.39 Yd/Min

Ticking:  
Fill 1:  
Fill 2:  
Fill 3:  
Fill 4:  
Backing:  
Panel Length: 60.00  
Panel Width: 80.00

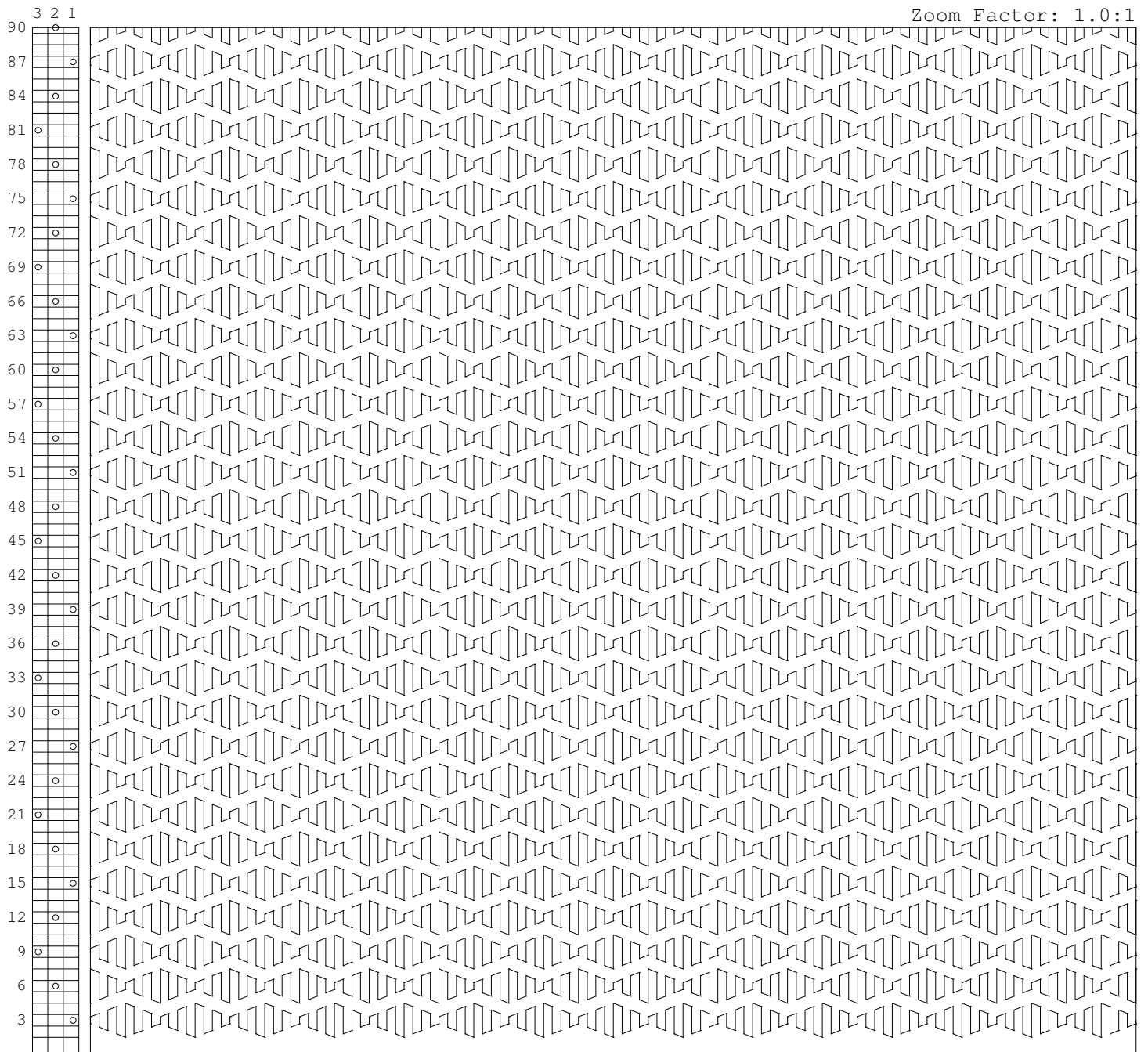




# Gribetz International Pattern Development

Pattern ID: CON-SIDE  
Description: CON-SIDE  
Pattern Type: C  
Units: E  
Needle Setting: sx3-2-3  
Shape File: c:\Complete BBs\CON-SIDE.BB  
Pattern Length: 6.00  
Pattern Width: 3.00  
Yield: .91 Yd/Min

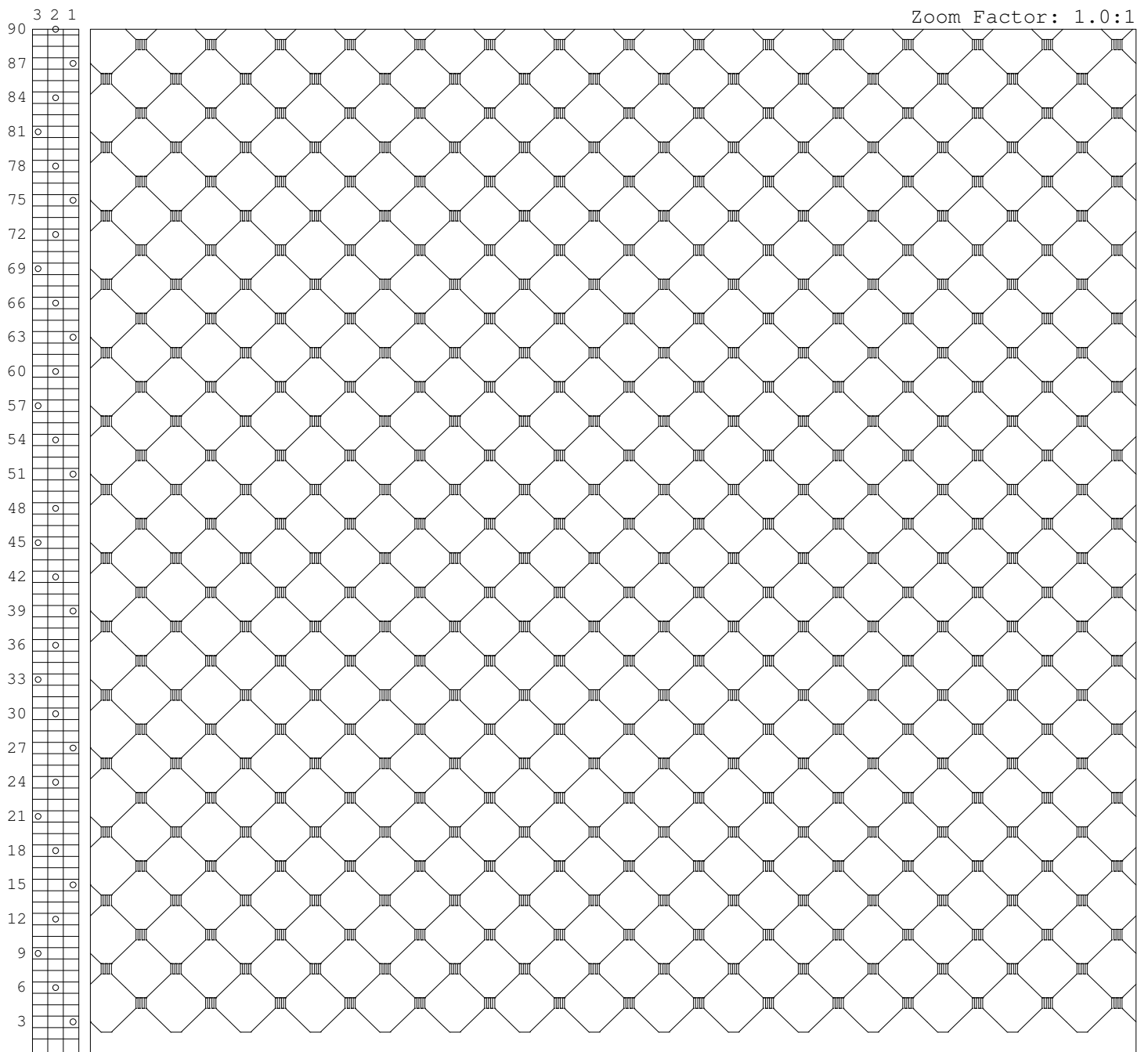
Ticking:  
Fill 1:  
Fill 2:  
Fill 3:  
Fill 4:  
Backing:  
Panel Length: 60.00  
Panel Width: 80.00



# Gribetz International Pattern Development

Pattern ID: DIABOX2  
Description: DIABOX2  
Pattern Type: C  
Units: E  
Needle Setting: sx3-2-3  
Shape File: c:\Complete BBs\DIABOX2.BB  
Pattern Length: 6.00  
Pattern Width: 3.00  
Yield: 1.44 Yd/Min

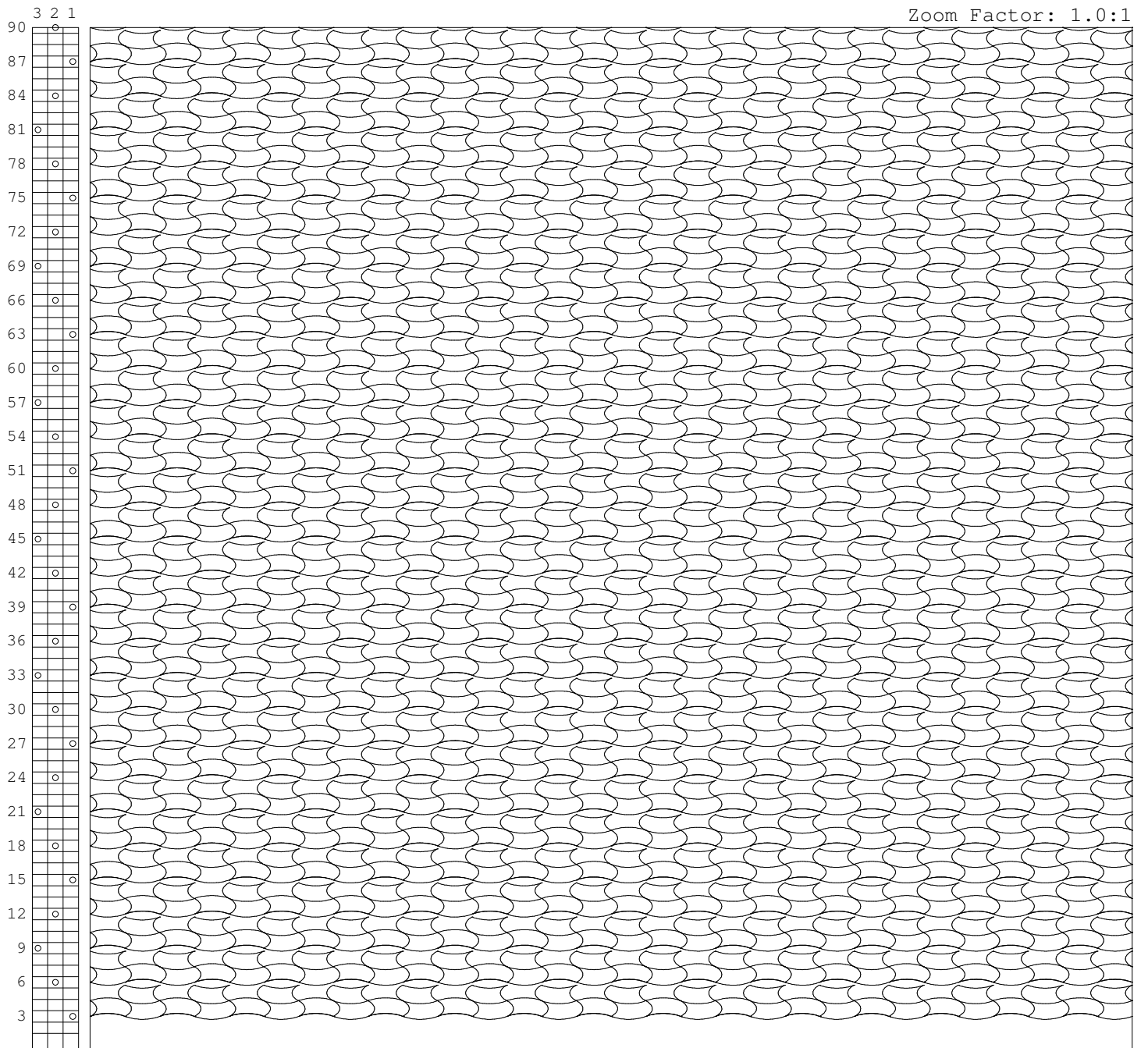
Ticking:  
Fill 1:  
Fill 2:  
Fill 3:  
Fill 4:  
Backing:  
Panel Length: 60.00  
Panel Width: 80.00



# Gribetz International Pattern Development

Pattern ID: DIABOX2  
Description: DIABOX2  
Pattern Type: C  
Units: E  
Needle Setting: sx3-2-3  
Shape File: c:\Complete BBs\Fishnet.BB  
Pattern Length: 6.00  
Pattern Width: 3.00  
Yield: .74 Yd/Min

Ticking:  
Fill 1:  
Fill 2:  
Fill 3:  
Fill 4:  
Backing:  
Panel Length: 60.00  
Panel Width: 80.00



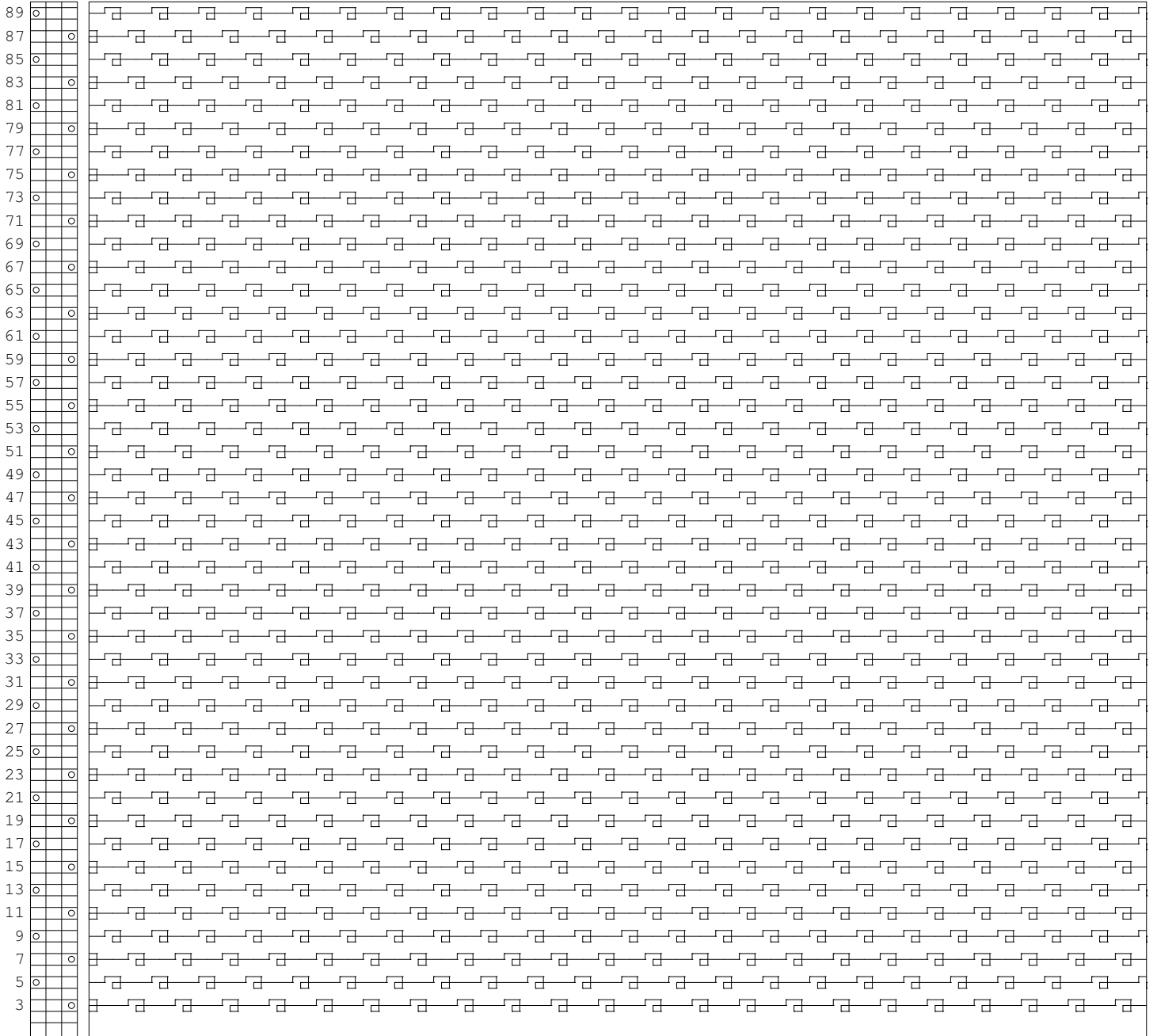
# Gribetz International Pattern Development

Pattern ID: MCONCEPT  
Description: MCONCEPT  
Pattern Type: C  
Units: E  
Needle Setting: sx2-3  
Shape File: c:\Complete BBs\MCONCEPT.BB  
Pattern Length: 4.00  
Pattern Width: 1.00  
Yield: 1.73 Yd/Min

Ticking:  
Fill 1:  
Fill 2:  
Fill 3:  
Fill 4:  
Backing:  
Panel Length: 60.00  
Panel Width: 80.00

3 2 1

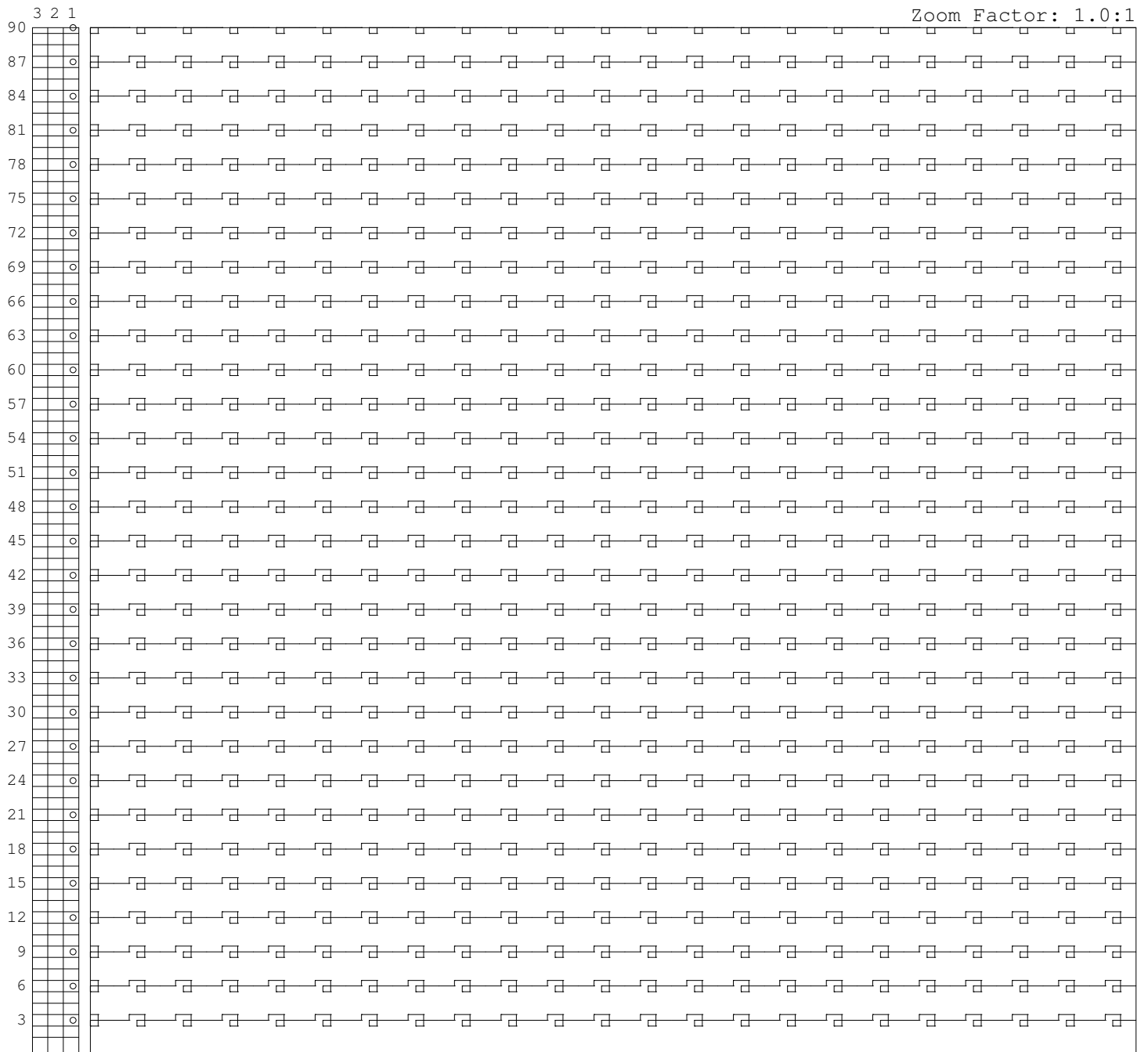
Zoom Factor: 1.0:1



# Gribetz International Pattern Development

Pattern ID: MCONCEPT  
Description: MCONCEPT  
Pattern Type: C  
Units: E  
Needle Setting: sx3-1  
Shape File: c:\Complete BBs\MCONCEPT.BB  
Pattern Length: 4.00  
Pattern Width: 1.00  
Yield: 1.73 Yd/Min

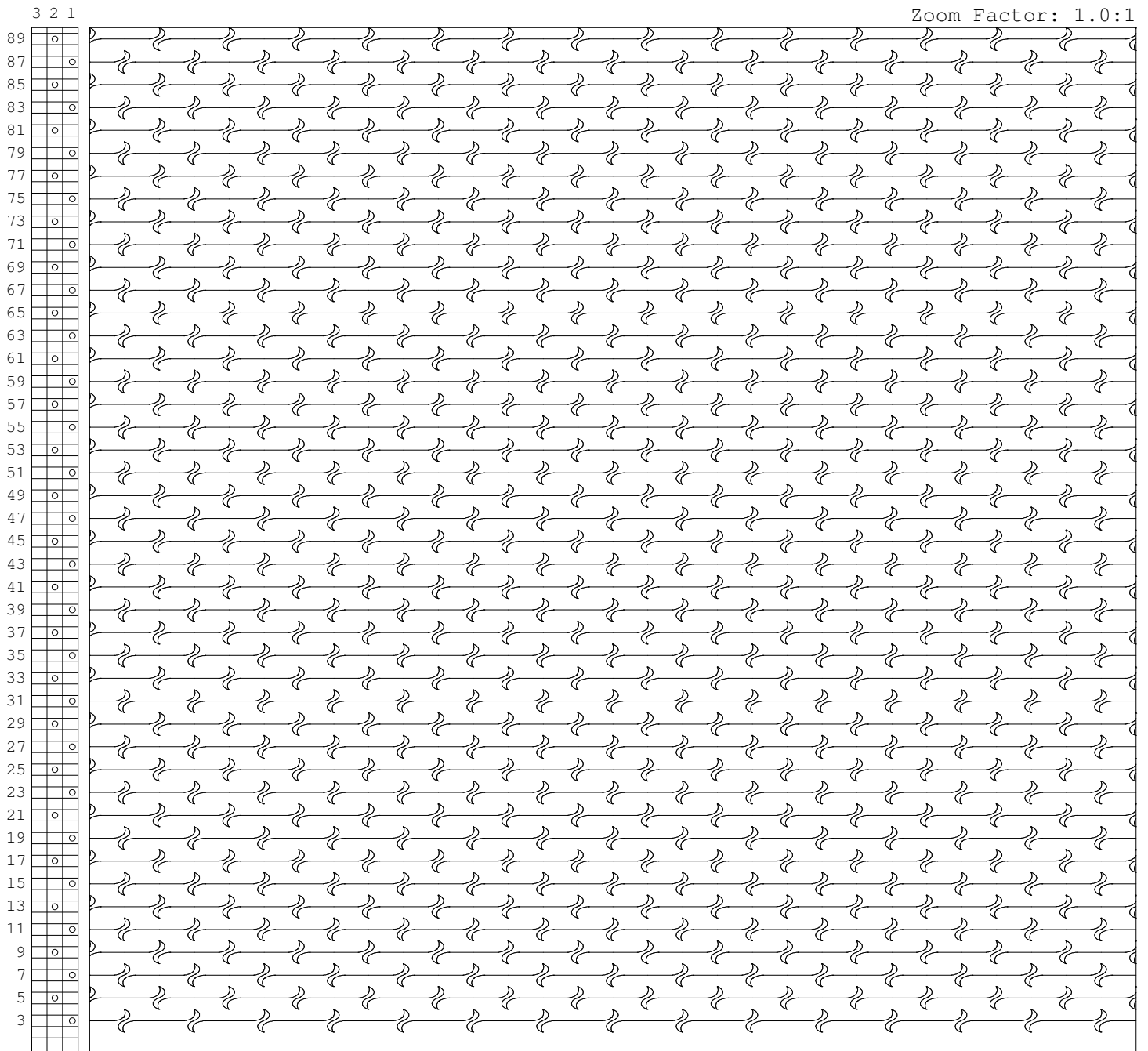
Ticking:  
Fill 1:  
Fill 2:  
Fill 3:  
Fill 4:  
Backing:  
Panel Length: 60.00  
Panel Width: 80.00



# Gribetz International Pattern Development

Pattern ID: SOLEI  
Description: SOLEI  
Pattern Type: C  
Units: E  
Needle Setting: sx2-2  
Shape File: c:\Complete BBs\SOLEI.BB  
Pattern Length: 6.00  
Pattern Width: 2.00  
Yield: 1.81 Yd/Min

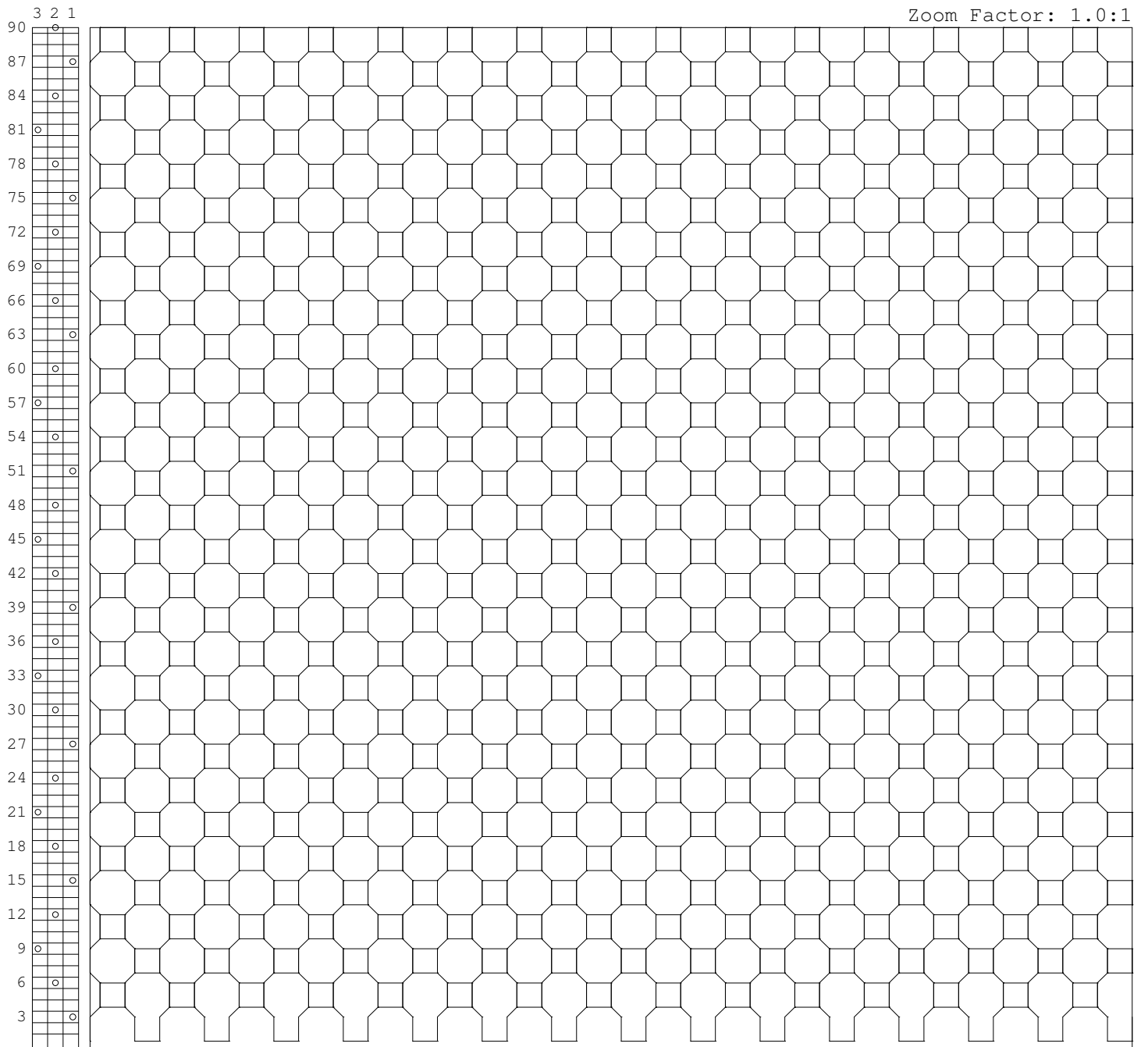
Ticking:  
Fill 1:  
Fill 2:  
Fill 3:  
Fill 4:  
Backing:  
Panel Length: 60.00  
Panel Width: 80.00



# Gribetz International Pattern Development

Pattern ID: TILE  
Description: TILE  
Pattern Type: C  
Units: E  
Needle Setting: sx3-2-3  
Shape File: c:\Complete BBs\TILE.BB  
Pattern Length: 6.00  
Pattern Width: 5.13  
Yield: 1.25 Yd/Min

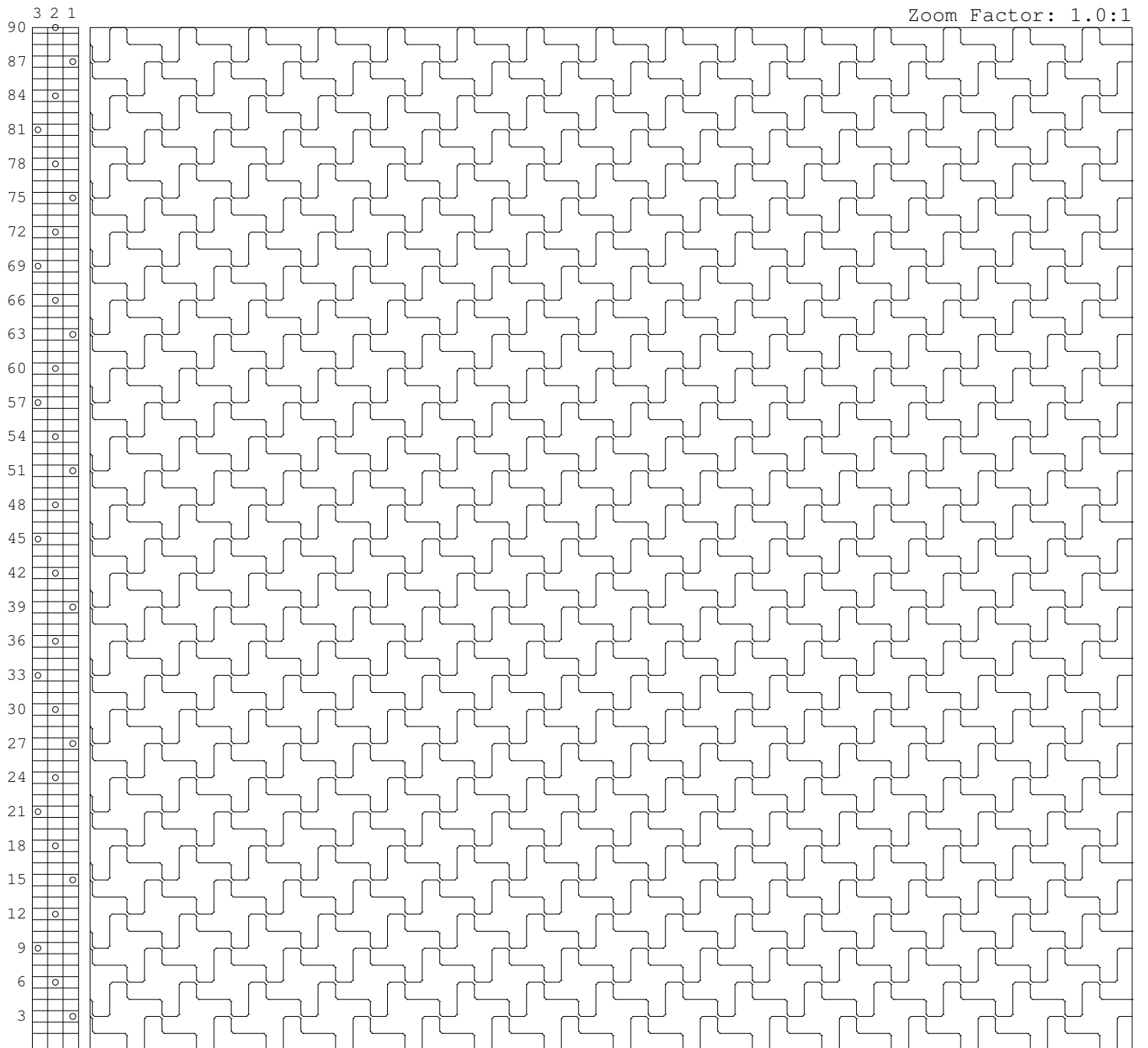
Ticking:  
Fill 1:  
Fill 2:  
Fill 3:  
Fill 4:  
Backing:  
Panel Length: 60.00  
Panel Width: 80.00



# Gribetz International Pattern Development

Pattern ID: UPDOWN  
Description: UPDOWN  
Pattern Type: C  
Units: E  
Needle Setting: sx3-2-3  
Shape File: c:\Complete BBs\UPDOWN.BB  
Pattern Length: 6.00  
Pattern Width: 3.00  
Yield: 1.68 Yd/Min

Ticking:  
Fill 1:  
Fill 2:  
Fill 3:  
Fill 4:  
Backing:  
Panel Length: 60.00  
Panel Width: 80.00



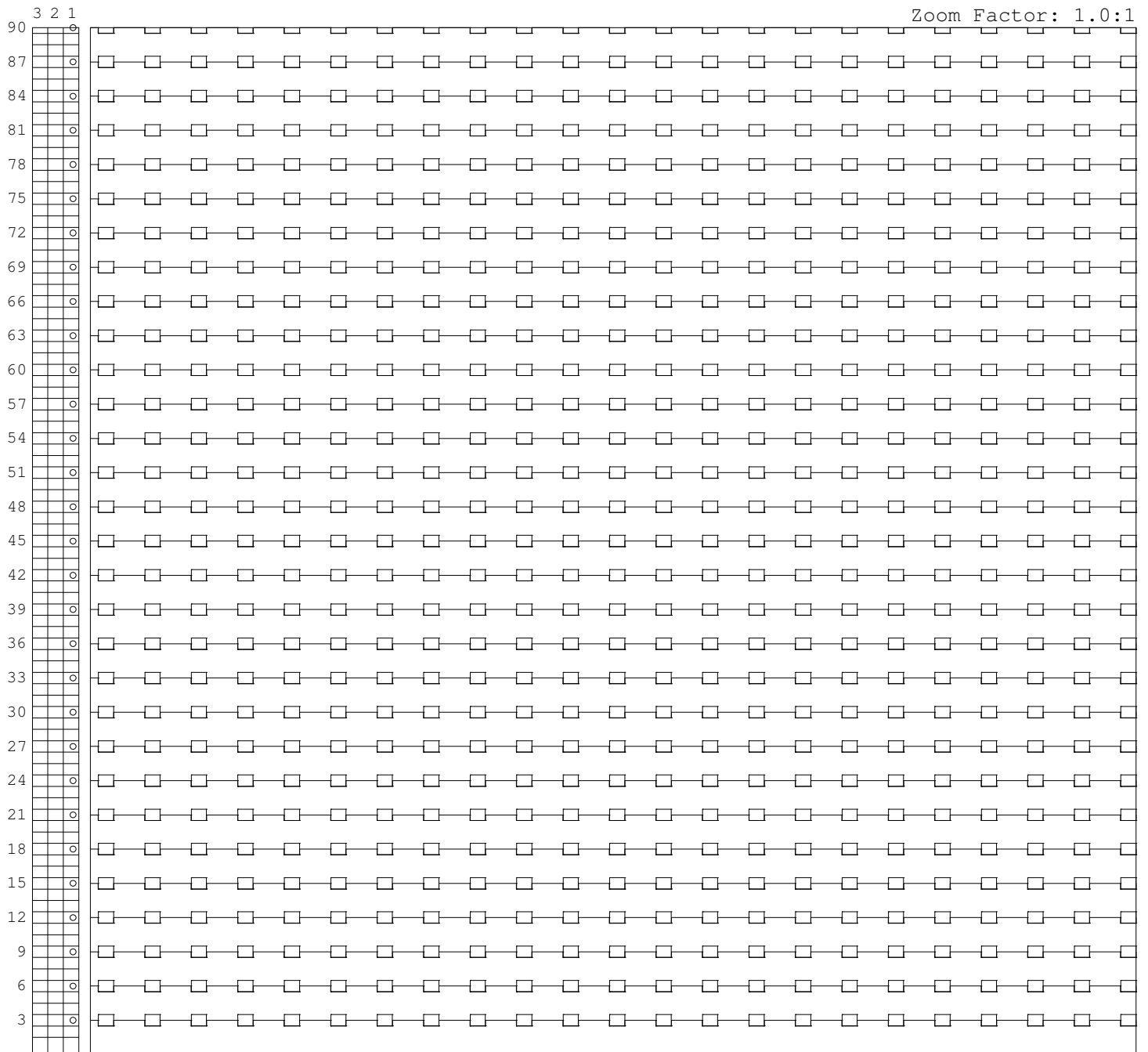




# Gribetz International Pattern Development

Pattern ID: URBAN  
Description: URBAN  
Pattern Type: C  
Units: E  
Needle Setting: sx3-1  
Shape File: c:\Complete BBs\URBAN.BB  
Pattern Length: 4.00  
Pattern Width: 1.00  
Yield: 1.33 Yd/Min

Ticking:  
Fill 1:  
Fill 2:  
Fill 3:  
Fill 4:  
Backing:  
Panel Length: 60.00  
Panel Width: 80.00





# Gribetz International Pattern Development

Pattern ID: ZAG-LINE  
Description: ZAG-LINE  
Pattern Type: C  
Units: E  
Needle Setting: sx3-2-3  
Shape File: c:\Complete BBs\ZAG-LINE.BB  
Pattern Length: 6.00  
Pattern Width: 3.00  
Yield: 1.14 Yd/Min

Ticking:  
Fill 1:  
Fill 2:  
Fill 3:  
Fill 4:  
Backing:  
Panel Length: 60.00  
Panel Width: 80.00

